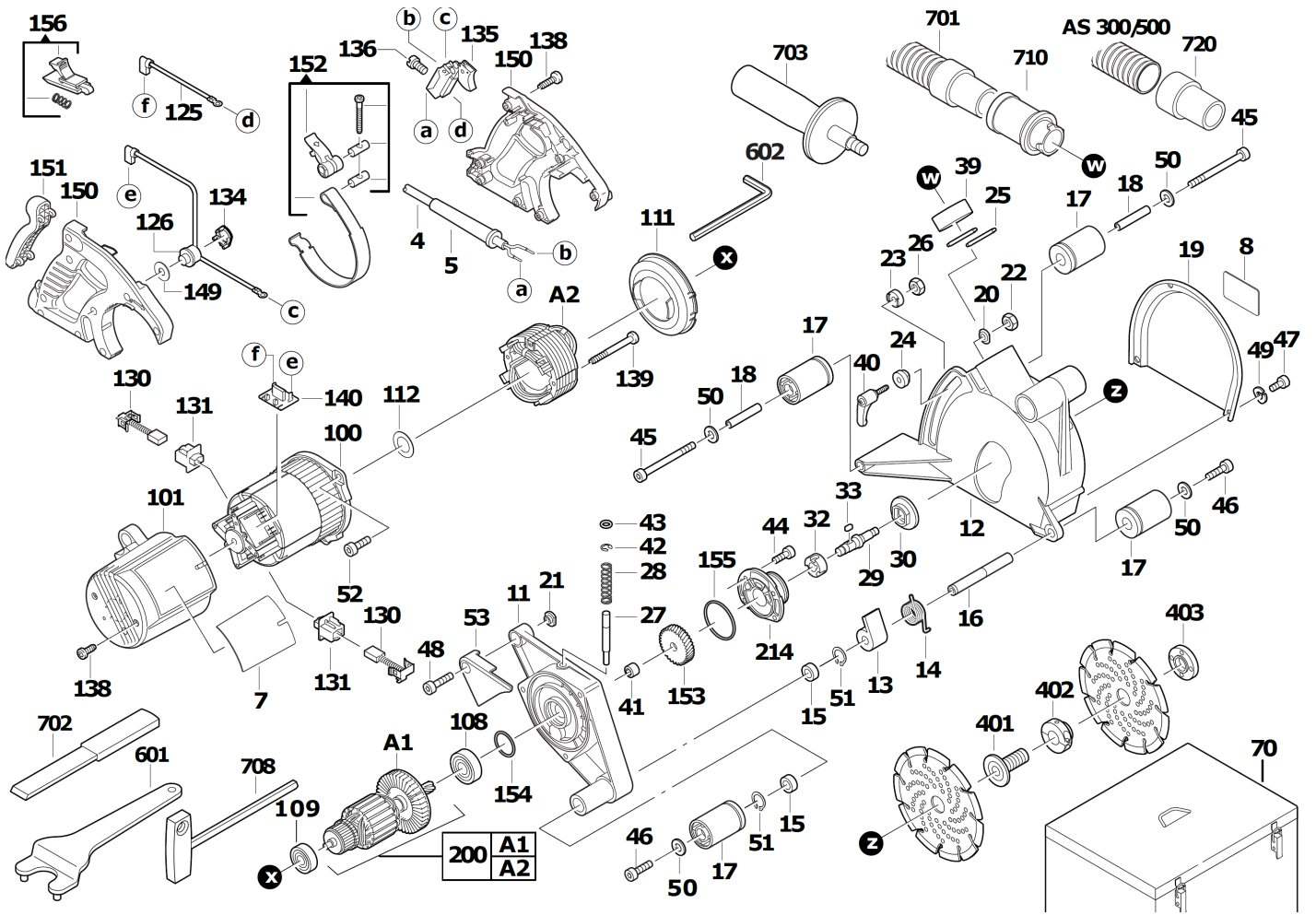


WCS45/M WALL-GROVE MIL.CUT. IN2

4933383350 - WCS45 - 4000393004





| Position | Quantity | Description | Part number | EAN |
|----------|----------|--------------------------------|-------------------------------|---------------|
| 0004 1 | 1 | CONNECTION CABLE | Item discontinued(4931383611) | |
| 0005 2 | 1 | CABLE CLAMP | Item discontinued(44760050) | |
| 0007 3 | 1 | TYPE PLATE | Item discontinued(12990005) | |
| 0008 4 | 1 | TYPE PLATE | 4931378806 | 4002395684755 |
| 0011 5 | 1 | DRIVING PLATE | 4931413244 | 4002395793693 |
| 0012 6 | 1 | GUARD CAP | 4931413247 | 4002395793709 |
| 0013 7 | 1 | COVER | 4931383375 | 4002395730292 |
| 0014 8 | 1 | SPRING | 4931383376 | 4002395730308 |
| 0015 9 | 2 | BUSH | 4931383377 | 4002395730315 |
| 0016 10 | 1 | AXLE | 4931383378 | 4002395730322 |
| 0017 11 | 4 | ROLL | 4931383379 | 4002395730339 |
| 0018 12 | 2 | AXLE | 4931383384 | 4002395730377 |
| 0019 13 | 1 | COVER PLATE | 4931383381 | 4002395730346 |
| 0020 14 | 1 | WASHER | 4931383382 | 4002395730353 |
| 0021 15 | 1 | SPACER | 4931383383 | 4002395730360 |
| 0022 16 | 1 | NUT D 985 M 6 GAL | 4931616196 | 4002395694563 |
| 0023 17 | 1 | WASHER | 4931383386 | 4002395730391 |
| 0024 18 | 1 | BUSH | 4931383385 | 4002395730384 |
| 0025 19 | 1 | RULER THRUST | 4931383387 | 4002395730407 |
| 0026 20 | 1 | NUT D 934 M 6 | 4931621674 | 4002395695775 |
| 0027 21 | 1 | LOCKING ROD | 4931383388 | 4002395730414 |
| 0028 22 | 1 | PRESSURE SPRING | 4931383389 | 4002395730421 |
| 0029 23 | 1 | DRIVING SHAFT | 4931383390 | 4002395730438 |
| 0030 24 | 1 | CLAMPING FLANGE | 4931348960 | 4002395773084 |
| 0032 25 | 1 | BUSH | 4931383392 | 4002395730445 |
| 0033 26 | 1 | KEY | 4931383393 | 4002395730452 |
| 0039 27 | 1 | SLEEVE | 4931383395 | 4002395730476 |
| 0040 28 | 1 | CLAMPING LEVER | 4931383499 | 4002395730520 |
| 0041 29 | 1 | NEEDLE BEARING N874989 HK 1010 | 4931943567 | 4002395707102 |
| 0042 30 | 1 | SHAFT CLIP | 4931621973 | 4002395696482 |
| 0043 31 | 1 | O-RING | 4931383396 | 4002395730483 |
| 0044 32 | 4 | SCREW | 4931383397 | 4002395730490 |
| 0045 33 | 2 | SCREW D 912 M 4X10 SSI | 4931624384 | 4002395745609 |
| 0046 34 | 2 | SCREW D912 M6X12 | 4931607021 | 4002395693870 |
| 0047 35 | 3 | SCREW | Item discontinued(4931383399) | |
| 0048 36 | 1 | SCREW D 912 M 4X10 SSI | 4931624382 | 4002395745579 |
| 0049 37 | 3 | SPRING WASHER | 4931623799 | 4002395703968 |
| 0050 38 | 4 | SEALING WASHER | 4931615511 | 4002395694365 |
| 0051 39 | 2 | RING D471 12X1 | 4931605142 | 4002395693627 |
| 0052 40 | 3 | SCREW | Item discontinued(4931383504) | |
| 0053 41 | 1 | COVER | 4931385349 | 4002395727872 |
| 0100 42 | 1 | HOUSING | 31500050 | 4058546071585 |
| 0101 43 | 1 | BONNET | Item discontinued(4931383613) | |
| 0108 44 | 1 | BALL BEARING | 4931435723 | 4002395863754 |
| 0109 45 | 1 | BALL BEARING | 02040847 | 4058546067977 |
| 0111 46 | 1 | AIR DEFLECTOR RING | 31050045 | 4058546071233 |
| 0112 47 | 1 | WASHER | 45880577 | 4058546074784 |
| 0125 48 | 1 | CABLE | Item discontinued(23941180) | |
| 0126 49 | 1 | SWITCH | Item discontinued(4931385373) | |
| 0130 50 | 2 | CARBON BRUSH | Item discontinued(22180085) | |

| Position | Quantity | Description | Part number | EAN |
|----------|----------|-----------------------------|-------------------------------|---------------|
| 0131 51 | 2 | BRUSH HOLDER | 22220030 | 4002395881543 |
| 0134 52 | 1 | SWITCH RETAINER | 4931385599 | 4002395730568 |
| 0135 53 | 1 | SWITCH | 23662117 | 4058546070533 |
| 0136 54 | 4 | SCREW | Item discontinued(05890045) | |
| 0138 55 | 10 | SCREW | 06827270 | 4058546068974 |
| 0139 56 | 1 | PART NOT DEATAILED | 1000063920 | |
| 0140 57 | 1 | CAPACITOR | 14201325 | 4058546069506 |
| 0149 58 | 1 | SEALING WASHER | 4931383422 | 4002395724895 |
| 0150 59 | 1 | HANDLE COMPL. | Item discontinued(4931383614) | |
| 0151 60 | 1 | HANDLE | Item discontinued(44520682) | |
| 0152 61 | 1 | STRIP-BAND | 4931383615 | 4002395714148 |
| 0153 62 | 1 | GEAR | 4931383616 | 4002395714155 |
| 0154 63 | 1 | O-RING | 34401375 | 4058546072117 |
| 0155 64 | 1 | O-RING | 34401380 | 4058546072124 |
| 0156 65 | 1 | SLIDER | 4931383617 | 4002395714162 |
| 0200 66 | 1 | MOTOR ASSEMBLY | 290302004 | 4002395849659 |
| 0214 67 | 1 | BEARING END PLATE | 4931393224 | 4002395752652 |
| 0401 68 | 1 | Location bolt | 4931383394 | 4002395730469 |
| 0402 69 | 1 | CLAMPING NUT | 4931449262 | 4058546041106 |
| 0403 70 | 1 | ADJUSTING LOCK | 4931449351 | 4002395256396 |
| 0602 71 | 1 | SCREW DRIVER | 4931606753 | 4002395693757 |
| 0708 72 | 1 | T-SPANNER | 4931362928 | 4002395661879 |
| 0720 73 | 1 | NOSEPIECE | 4931419658 | 4002395840359 |
| 0601 74 | 1 | PIN SPANNER WS(A) P1 C35 | 4932371469 | 4002395342181 |
| 0701 75 | 1 | TUYAU ASPIRATION 4M | 4932334704 | |
| 0702 76 | 1 | BREAK-OUT CHISEL DME P1 AEG | Item discontinued(4932371358) | |
| 0710 77 | 1 | ADAPTER DME P1 AEG | 4932362778 | 4002395334285 |