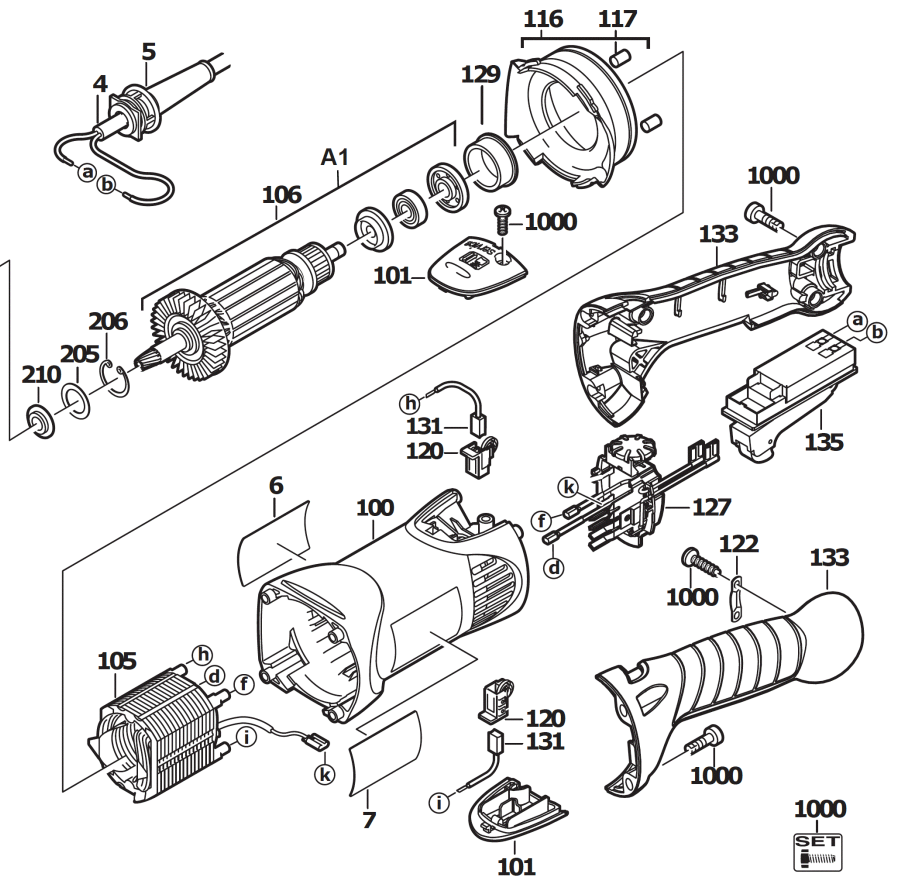
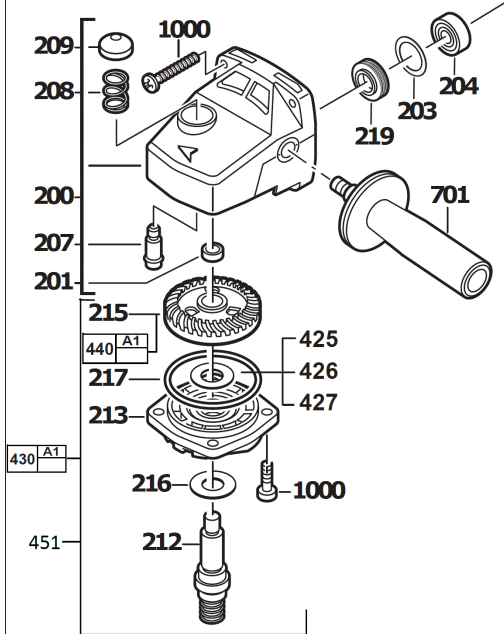
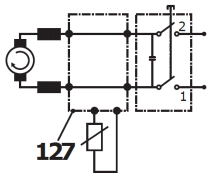


# AP12E 230V ANGLE POLISHER IN2

4933383925 - AP12E - 4000463825





| Position | Quantity | Description              | Part number                   | EAN           |
|----------|----------|--------------------------|-------------------------------|---------------|
| 0004 1   | 1        | CONNECTION CABLE         | 4931624510                    | 4002395827220 |
| 0005 2   | 1        | PROTECTING COVER         | 4931409552                    | 4002395801107 |
| 0006 3   | 1        | RATING PLATE             | 4931463828                    | 4058546036645 |
| 0007 4   | 1        | TYPE PLATE               | 4931378806                    | 4002395684755 |
| 0100 5   | 1        | MOTOR HOUSING            | 4931378768                    | 4002395684601 |
| 0101 6   | 2        | COVER                    | 4931378566                    | 4002395684199 |
| 0105 7   | 1        | ELECTRIC FIELD           | 4931463366                    | 4002395175390 |
| 0106 8   | 1        | ARMATURE                 | Item discontinued(4931442755) |               |
| 0116 9   | 1        | AIR DEFLECTOR RING       | 4931378135                    | 4002395683123 |
| 0117 10  | 2        | HOLDING-DOWN DEVICE      | 4931409768                    | 4002395847617 |
| 0120 11  | 2        | BRUSH HOLDER             | 4931382268                    | 4002395690961 |
| 0122 12  | 1        | CABLE COLLAR             | 4931256500                    | 4002395586547 |
| 0127 13  | 1        | ELECTRONIC ELEMENT       | 4931463361                    | 4002395175352 |
| 0129 14  | 1        | BEARING SLEEVE           | 4931326953                    | 4002395607846 |
| 0131 15  | 1        | CARBON BRUSH SET         | 4931381391                    | 4002395726936 |
| 0133 16  | 1        | HANDLE                   | 4931378765                    | 4002395684595 |
| 0135 17  | 1        | SWITCH                   | 4931378983                    | 4002395714629 |
| 0200 18  | 1        | GEAR BOX                 | 4931412273                    | 4002395798926 |
| 0201 19  | 1        | SLEEVE N874989 HKO 0810  | 4931912093                    | 4002395706464 |
| 0203 20  | 1        | WASHER                   | 4931362085                    | 4002395660254 |
| 0204 21  | 1        | GROOVED BALL BEAR.       | 4931368037                    | 4002395670642 |
| 0205 22  | 1        | DISC                     | 4931622761                    | 4002395699056 |
| 0206 23  | 1        | LOCKING RING             | 4931616614                    | 4002395694624 |
| 0207 24  | 1        | LOCKING BOLT             | 4931326929                    | 4002395607785 |
| 0208 25  | 1        | PRESSURE SPRING          | 4931326942                    | 4002395607822 |
| 0209 26  | 1        | PUSH-BUTTON              | 4931326930                    | 4002395607792 |
| 0210 27  | 1        | WASHER                   | 4931624287                    | 4002395732098 |
| 0212 28  | 1        | SPINDLE                  | 4931409808                    | 4002395837168 |
| 0213 29  | 1        | BEARING END PLATE        | 4931378310                    | 4002395683789 |
| 0215 30  | 1        | WHEEL                    | Item discontinued(4931432141) |               |
| 0216 31  | 1        | DISC                     | 4931623480                    | 4002395702398 |
| 0217 32  | 1        | SEAL RING                | 4931623590                    | 4002395702992 |
| 0219 33  | 1        | GREASE RETAIN.DISC       | 4931378280                    | 4002395683703 |
| 0425 34  | 1        | DISC N874237 12,2X22X0,1 | 4931808473                    | 4002395727544 |
| 0426 35  | 1        | DISC N874237 12,2X22X0,2 | 4931925940                    | 4002395706624 |
| 0427 36  | 1        | DISC                     | 4931624256                    | 4002395723379 |
| 0430 37  | 1        | REPAIR KIT               | 4931432441                    | 4002395884896 |
| 0440 38  | 1        | REPAIR KIT               | 4931432442                    | 4002395882106 |
| 0451 39  | 1        | GRINDING SPINDLE         | 4931432462                    | 4002395895472 |
| 0701 40  | 1        | HOLDING GRIP             | 4931369805                    | 4002395674244 |
| 1000 41  | 1        | BOLT SET                 | 4931378570                    | 4002395684205 |