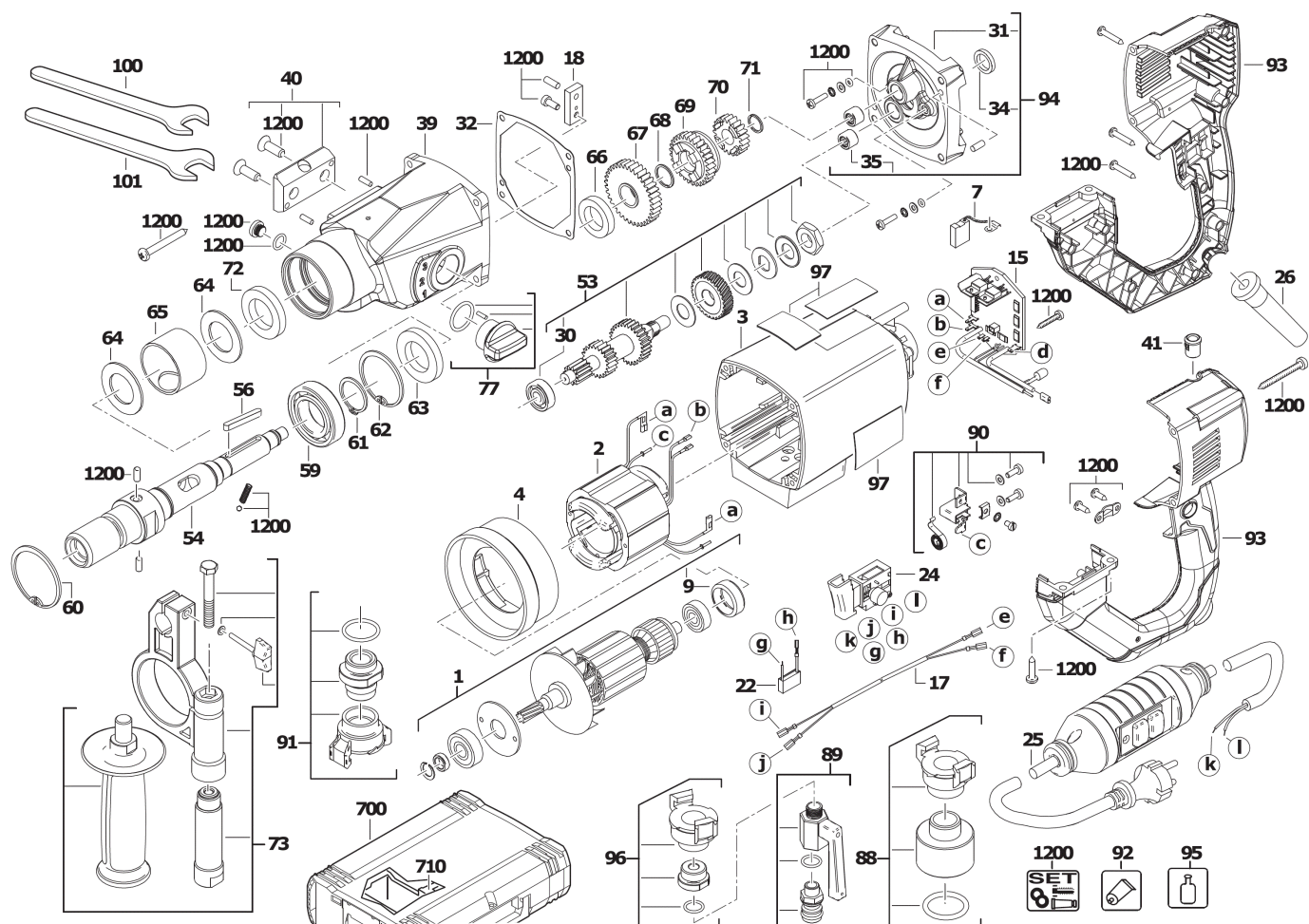


DD3-152 230V COMBI DIAMOND DRILL IN2

4933428000 - DD3-152 - 4000428001





Position	Quantity	Description	Part number	EAN
0001 1	1	ARMATURE	4931428015	4002395842179
0002 2	1	ELECTRIC FIELD	4931428016	4002395842186
0003 3	1	MOTOR HOUSING	4931428017	4002395842193
0004 4	1	AIR DEFLECTOR RING	Item discontinued(4931428018)	
0007 5	1	CARBON BRUSH SET	4931428019	4002395842216
0009 6	1	BEARING COVER	4931428036	4002395842223
0015 7	1	PRINTED CIRCUIT	4931428038	4002395842247
0017 8	1	CABLE SET	4931428039	4002395842254
0018 9	1	SWITCH LEVER	4931428040	4002395842261
0022 10	1	INTERFERENCE SUPPR.	4931428041	4002395842278
0024 11	1	SWITCH	4931428042	4002395842476
0025 12	1	CONNECTION CABLE	4931428043	4002395842285
0026 13	1	PROTECTING COVER	4931428044	4002395842292
0030 14	1	GROOVED BALL BEAR.	4931428045	4002395842308
0031 15	1	GEAR ENDPLATE	Item discontinued(4931428046)	
0032 16	1	SEAL	4931428047	4002395842322
0034 17	1	SEAL RING	4931428048	4002395842339
0035 18	2	NEEDLE BUSH	4931428049	4002395842346
0039 19	1	GEAR BOX HOUSING	4931428553	4002395842353
0040 20	1	Supporting plate with 2 hex. sock. screw	4931428554	4002395842360
0041 21	1	HOLDING DEVICE	4931428555	4002395842377
0053 22	1	CLUTCH	4931428556	4002395842384
0054 23	1	SPINDLE	4931428557	4002395842391
0056 24	1	PARALLEL KEY	4931428558	4002395842407
0059 25	1	GROOVED BALL BEAR.	4931428559	4002395842414
0060 26	1	PROTECTION WASHER	4931428560	4002395842421
0061 27	1	PROTECTION WASHER	4931428561	4002395842438
0062 28	1	PROTECTION WASHER	4931428562	4002395842445
0063 29	1	SEAL RING	4931428563	4002395842452
0064 30	2	STRIPPER	4931428564	4002395842469
0065 31	1	SPACER	4931428565	4002395842568
0066 32	1	SEAL RING	4931428566	4002395842575
0067 33	1	WHEEL	4931428567	4002395842582
0068 34	1	SPRING RING	4931428568	4002395842599
0069 35	1	JUMPER RING	4931428569	4002395842605
0070 36	1	WHEEL	4931428570	4002395842612
0071 37	1	SPRING RING	4931428571	4002395842629
0072 38	1	SEAL RING	4931428572	4002395842636
0073 39	1	HANDLE	4931428573	4002395842643
0077 40	1	SWITCH LEVER	4931428574	4002395842650
0088 41	1	ADAPTOR	4931428578	4002395842698
0089 42	1	VALVE	4931428579	4002395842704
0090 43	1	BRUSH HOLDER PAIR	4931428580	4002395842728
0091 44	1	CONNECTOR	4931428581	4002395842735
0092 45	1	GREASE DEPOSIT	4931428582	4002395842742
0093 46	1	HANDLE SHELLS	4931428583	4002395842759
0094 47	1	GEAR ENDPLATE	4931428584	4002395842766
0095 48	1	GEAR OIL 1L	4931428585	4002395842773
0096 49	1	CONNECTION SLEEVE	4931428586	4002395842780
0097 50	1	STICKER	Item discontinued(4931428588)	

Position	Quantity	Description	Part number	EAN
0100 51	1	SPANNER	4931428009	4002395844791
0101 52	1	SPANNER 41mm	4931428010	4002395844807
0700 53	1	CARRYING CASE	4931402576	4002395780266
0710 54	1	INSERT	4931428005	4002395902477
1200 55	1	BOLT SET	4931428587	4002395842797