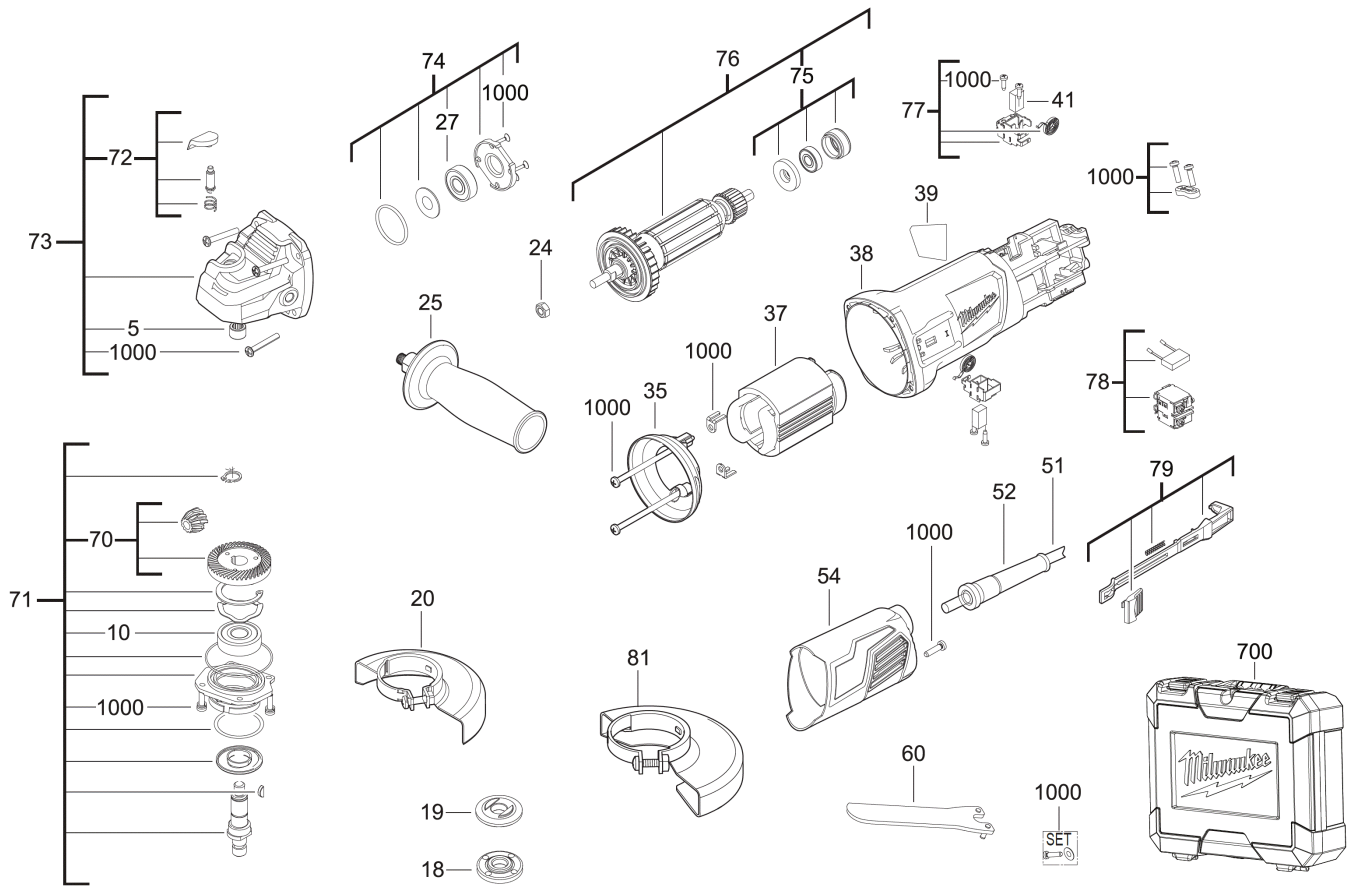


AG800-115E ANGLE GRINDER IN2

4933451210 - AG800-115E IN2 - 4000452802



Position	Quantity	Description	Part number	EAN
0005 1	1	NEEDLE BEARING	Item discontinued(4931453548)	
0010 2	1	BALL BEARING	4931453524	4002395144310
0018 3	1	INTERMEDIATE FLANGE	4931453551	4002395145782
0019 4	1	INTERMEDIATE FLANGE	4931453543	4002395145706
0020 5	1	GUARD	4931453540	4002395145072
0024 6	1	NUT	4931453549	4002395145768
0025 7	1	AUXILIARY HANDLE	4931453554	4002395146413
0027 8	1	BALL BEARING	4931453523	4002395144303
0035 9	1	AIR DEFLECTOR RING	4931453520	4002395143672
0037 10	1	ELECTRIC FIELD	4931453537	4002395145041
0038 11	1	MOTOR HOUSING	4931453547	4002395145744
0039 12	1	RATING PLATE	4931453561	4002395146499
0041 13	2	CARBON BRUSH	4931453529	4002395144365
0051 14	1	CONNECTION CABLE	4931453557	4002395146451
0052 15	1	PROTECTING COVER	4931453530	4002395144372
0054 16	1	HOUSING CAP	4931453559	4002395146475
0060 17	1	WRENCH	4931453578	4002395144464
0070 18	1	GEARWHEEL SET	4931453553	4002395146406
0071 19	1	SPINDLE	4931453571	4002395143795
0072 20	1	LOCKING LEVER	4931453546	4002395145737
0073 21	1	GEAR BOX	4931453538	4002395145058
0074 22	1	BEARING KIT	4931453526	4002395144334
0075 23	1	BALL BEARING	4931453525	4002395144327
0076 24	1	ARMATURE	4931453522	4002395143696
0077 25	2	BRUSH HOLDER	4931453528	4002395144358
0078 26	1	SWITCH	4931453575	4002395144433
0079 27	1	SWITCH BUTTON	4931453576	4002395144440
0081 28	1	GUARD CAP	4931419252	4002395827138
0700 29	1	CARRYING CASE	4931453527	4002395144341
1000 30	1	SCREW	4931453560	4002395146482