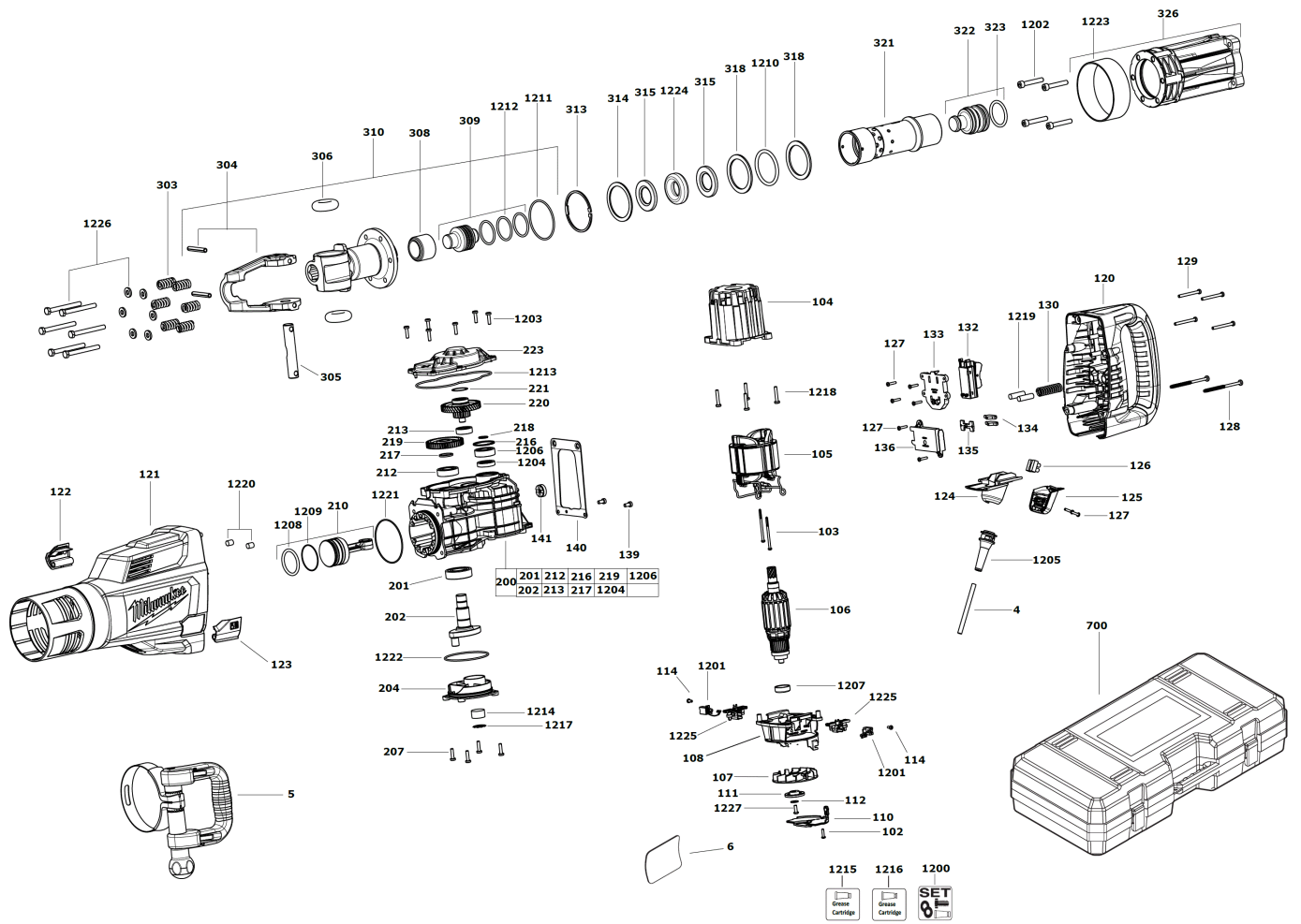


# K1528H 16KG BREAKER IN2

4933464118 - K1528H IN2 - 4000455551





| Position | Quantity | Description         | Part number | EAN           |
|----------|----------|---------------------|-------------|---------------|
| 0004 1   | 1        | CONNECTION CABLE    | 4931624696  | 4002395800872 |
| 0005 2   | 1        | HANDLE              | 4931455093  | 4058546243470 |
| 0006 3   | 1        | RATING PLATE        | 4931463105  | 4058546243258 |
| 0102 4   | 1        | SCREW               | 4931624537  | 4002395760022 |
| 0103 5   | 2        | SCREW               | 4931339996  | 4002395623976 |
| 0104 6   | 1        | MOTOR HOUSING       | 4931455573  | 4058546244750 |
| 0105 7   | 1        | FIELD EF.TRANSISTOR | 4931455516  | 4058546243722 |
| 0106 8   | 1        | ARMATURE            | 4931455515  | 4058546243715 |
| 0107 9   | 1        | FAN                 | 4931455525  | 4058546057206 |
| 0108 10  | 1        | BRUSH MODULE        | 4931455064  | 4058546243463 |
| 0110 11  | 1        | HOLDER              | 4931463938  | 4002395176731 |
| 0111 12  | 1        | MAGNET.DISC FASTEN. | 4931487401  | 4058546485467 |
| 0112 13  | 1        | WASHER              | 4931455939  | 4058546244934 |
| 0114 14  | 2        | SCREW               | 4931624538  | 4002395760039 |
| 0120 15  | 1        | HANDLE              | 4931455577  | 4058546243845 |
| 0121 16  | 1        | MOTOR HOUSING       | 4931455536  | 4058546057220 |
| 0122 17  | 1        | SERVICING LID       | 4931455959  | 4058546036218 |
| 0123 18  | 1        | SERVICING LID       | 4931455958  | 4058546036201 |
| 0124 19  | 1        | GUIDE PIECE         | 4931455934  | 4058546244897 |
| 0125 20  | 1        | HOUSING COVER       | 4931455997  | 4002395176083 |
| 0126 21  | 1        | TERMINAL STRIP      | 4931463903  | 4058546243234 |
| 0127 22  | 8        | SCREW               | 4931618253  | 4002395694945 |
| 0128 23  | 2        | SCREW               | 4931455992  | 4058546241261 |
| 0129 24  | 4        | SCREW               | 4931468965  | 4058546323264 |
| 0130 25  | 1        | PRESSURE SPRING     | 4931463951  | 4058546269081 |
| 0132 26  | 1        | SWITCH              | 4931455009  | 4058546056940 |
| 0133 27  | 1        | SWITCH RETAINER     | 4931455526  | 4058546244705 |
| 0134 28  | 2        | LIGHT PIPE          | 4931398114  | 4002395756063 |
| 0135 29  | 1        | HOLDER              | 4931455937  | 4058546244910 |
| 0136 30  | 1        | ELECTRONIC          | 4931487494  | 4058546507190 |
| 0139 31  | 2        | SCREW               | 4931455938  | 4058546244927 |
| 0140 32  | 1        | SPRING              | 4931455512  | 4058546057176 |
| 0141 33  | 1        | SPRING              | 4931455587  | 4058546057282 |
| 0200 34  | 1        | GEAR BOX            | 4931455893  | 4058546243906 |
| 0201 35  | 1        | GROOV. BALL BEARING | 4931455896  | 4058546243937 |
| 0202 36  | 1        | CRANK WHEEL         | 4931455077  | 4058546057138 |
| 0204 37  | 1        | COVER               | 4931455081  | 4058546057145 |
| 0207 38  | 4        | SCREW               | 4931624541  | 4002395762019 |
| 0210 39  | 1        | PISTON              | 4931455906  | 4058546244798 |
| 0212 40  | 1        | GROOV. BALL BEARING | 4931455897  | 4058546243944 |
| 0213 41  | 1        | GROOV. BALL BEARING | 4931455895  | 4058546243920 |
| 0216 42  | 1        | PROTECTION WASHER   | 4931455928  | 4058546244873 |
| 0217 43  | 1        | SPACER              | 4931455951  | 4058546036195 |
| 0218 44  | 1        | RING D471 17X1      | 4931605204  | 4002395693641 |
| 0219 45  | 1        | WHEEL               | 4931455058  | 4058546057084 |
| 0220 46  | 1        | GEAR                | 4931455055  | 4058546243456 |
| 0221 47  | 1        | DISC 31,7X26,5X0,4  | 4931881678  | 4002395706211 |
| 0223 48  | 1        | GEAR BOX COVER      | 4931455892  | 4058546244774 |
| 0303 49  | 6        | PRESSURE SPRING     | 4931463959  | 4058546292980 |
| 0304 50  | 1        | HOLDING BRACKET     | 4931468942  | 4058546320805 |

| Position | Quantity | Description         | Part number | EAN           |
|----------|----------|---------------------|-------------|---------------|
| 0305 51  | 1        | LOCKING BOLT        | 4931455903  | 4002395176052 |
| 0306 52  | 2        | DAMPING RING        | 4931463967  | 4058546291075 |
| 0308 53  | 1        | STOP WASHER         | 4931463943  | 4058546268725 |
| 0309 54  | 1        | SNAP DIE            | 4931455079  | 4058546243661 |
| 0310 55  | 1        | TOOL ACCEPTANCE     | 4931455594  | 4058546243869 |
| 0313 56  | 1        | PROTECTION WASHER   | 4931455990  | 4058546036270 |
| 0314 57  | 1        | ATTACHMENT RING     | 4931455989  | 4058546036263 |
| 0315 58  | 2        | BACK-PRESSURE RING  | 4931455068  | 4058546057114 |
| 0318 59  | 2        | ATTACHMENT RING     | 4931463992  | 4058546299873 |
| 0321 60  | 1        | SPINDLE SLEEVE      | 4931455590  | 4058546057299 |
| 0322 61  | 1        | PERCUSSION BODY     | 4931455596  | 4058546243876 |
| 0323 62  | 1        | PISTONRING          | 4931455926  | 4058546244859 |
| 0326 63  | 1        | GEAR BOX ASSY       | 4931455947  | 4058546244965 |
| 0700 64  | 1        | CARRYING CASE       | 4931463094  | 4058546243326 |
| 1200 65  | 1        | MAINTENANCE SET     | 4931468749  | 4058546293031 |
| 1201 66  | 1        | CARBON BRUSH SET    | 4931468438  | 4058546291013 |
| 1202 67  | 4        | SCREW               | 4931463944  | 4058546268466 |
| 1203 68  | 6        | SCREW               | 4931624541  | 4002395762019 |
| 1204 69  | 1        | PISTONRING          | 4931455927  | 4058546244866 |
| 1205 70  | 1        | PROTECTING COVER    | 4931392174  | 4002395772872 |
| 1206 71  | 1        | BALL BEARING        | 4931455898  | 4058546244781 |
| 1207 72  | 1        | RUBBER SLEEVE       | 4931455066  | 4058546057091 |
| 1208 73  | 2        | PISTONRING          | 4931455926  | 4058546244859 |
| 1209 74  | 1        | PISTONRING          | 4931455908  | 4058546244804 |
| 1210 75  | 1        | PISTONRING          | 4931455913  | 4058546244828 |
| 1211 76  | 1        | PISTONRING          | 4931463969  | 4058546299866 |
| 1212 77  | 3        | SEAL RING           | 4931463929  | 4058546243197 |
| 1213 78  | 1        | SEAL                | 4931455539  | 4058546243760 |
| 1214 79  | 1        | FELT                | 4931455541  | 4058546243777 |
| 1215 80  | 2        | GREASE TUBE         | 4931432782  | 4002395863143 |
| 1216 81  | 2        | GREASE              | 4931455865  | 4002395245925 |
| 1217 82  | 1        | RING                | 4931455961  | 4058546036225 |
| 1218 83  | 4        | SCREW D 912 AM 5X50 | 4931624075  | 4002395705429 |
| 1219 84  | 2        | DAMPING ELEMENT     | 4931455542  | 4058546244712 |
| 1220 85  | 2        | DAMPING ELEMENT     | 4931455932  | 4058546244880 |
| 1221 86  | 1        | PISTONRING          | 4931468797  | 4058546321215 |
| 1222 87  | 1        | PISTONRING          | 4931455917  | 4058546243975 |
| 1223 88  | 1        | GUIDE SLEEVE        | 4931463941  | 4002395176755 |
| 1224 89  | 1        | CORE LIFTER RING    | 4931455067  | 4058546057107 |
| 1225 90  | 2        | BRUSH HOLDER        | 4931463990  | 4058546292300 |
| 1226 91  | 1        | REPAIR KIT          | 4931468943  | 4058546320812 |
| 1227 92  | 1        | SCREW               | 4931455991  | 4058546036287 |