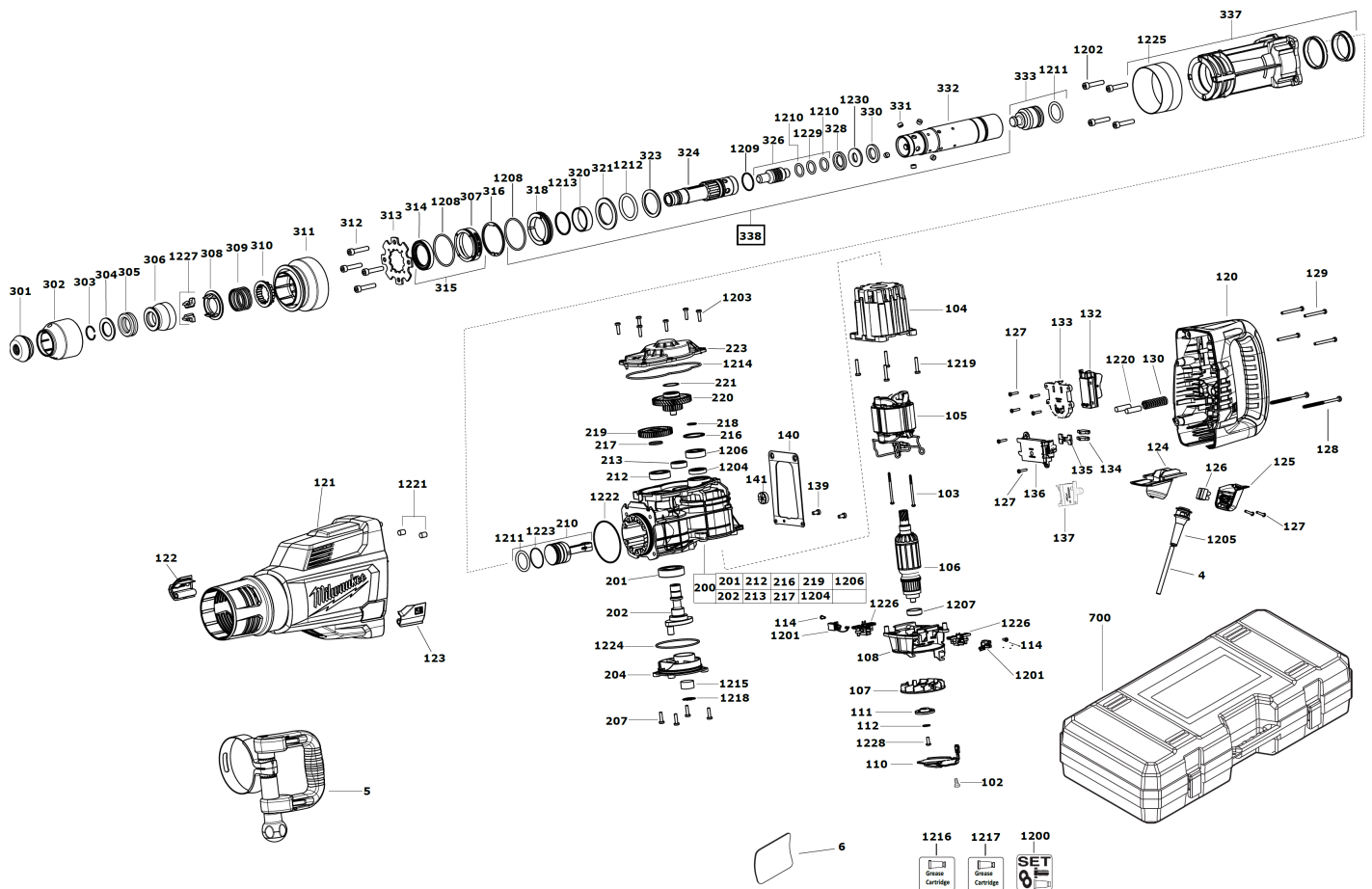


K1000S 10KG BREAKER IN2

4933464120 - K1000S IN2 - 4000455501





| Position | Quantity | Description | Part number | EAN |
|----------|----------|---------------------|-------------|---------------|
| 0004 1 | 1 | CONNECTION CABLE | 4931624696 | 4002395800872 |
| 0005 2 | 1 | SPEED HANDLE | 4931455046 | 4058546244675 |
| 0006 3 | 1 | RATING PLATE | 4931463107 | 4058546243272 |
| 0102 4 | 1 | SCREW | 4931624537 | 4002395760022 |
| 0103 5 | 2 | SCREW | 4931339996 | 4002395623976 |
| 0104 6 | 1 | HOUSING | 4931455585 | 4058546057275 |
| 0105 7 | 1 | ELECTRIC FIELD | 4931455950 | 4058546036188 |
| 0106 8 | 1 | ARMATURE | 4931455031 | 4058546057008 |
| 0107 9 | 1 | FAN | 4931455525 | 4058546057206 |
| 0108 10 | 1 | BRUSH MODULE | 4931455064 | 4058546243463 |
| 0110 11 | 1 | HOLDER | 4931463938 | 4002395176731 |
| 0111 12 | 1 | MAGNET.DISC FASTEN. | 4931487401 | 4058546485467 |
| 0112 13 | 1 | WASHER | 4931455939 | 4058546244934 |
| 0114 14 | 2 | SCREW | 4931624538 | 4002395760039 |
| 0120 15 | 1 | HANDLE | 4931455576 | 4058546243838 |
| 0121 16 | 1 | HOUSING SET ASSY | 4931455509 | 4058546244699 |
| 0122 17 | 1 | SERVICING LID | 4931455959 | 4058546036218 |
| 0123 18 | 1 | SERVICING LID | 4931455958 | 4058546036201 |
| 0124 19 | 1 | GUIDE PIECE | 4931455934 | 4058546244897 |
| 0125 20 | 1 | HOUSING COVER | 4931455997 | 4002395176083 |
| 0126 21 | 1 | TERMINAL STRIP | 4931463903 | 4058546243234 |
| 0127 22 | 8 | SCREW | 4931618253 | 4002395694945 |
| 0128 23 | 2 | SCREW | 4931455992 | 4058546241261 |
| 0129 24 | 4 | SCREW | 4931468965 | 4058546323264 |
| 0130 25 | 1 | PRESSURE SPRING | 4931463951 | 4058546269081 |
| 0132 26 | 1 | SWITCH | 4931455009 | 4058546056940 |
| 0133 27 | 1 | SWITCH RETAINER | 4931455526 | 4058546244705 |
| 0134 28 | 2 | LIGHT PIPE | 4931398114 | 4002395756063 |
| 0135 29 | 1 | HOLDER | 4931455937 | 4058546244910 |
| 0136 30 | 1 | ELECTRONIC | 4931487422 | 4058546507077 |
| 0137 31 | 1 | SLIDING SWITCH | 4931476531 | 4058546368258 |
| 0139 32 | 2 | SCREW | 4931455938 | 4058546244927 |
| 0140 33 | 1 | SPRING | 4931455512 | 4058546057176 |
| 0141 34 | 1 | SPRING | 4931455587 | 4058546057282 |
| 0200 35 | 1 | GEAR BOX ASSY | 4931455942 | 4058546244941 |
| 0201 36 | 1 | GROOV. BALL BEARING | 4931455896 | 4058546243937 |
| 0202 37 | 1 | CRANK ASSEMBLY | 4931455039 | 4058546057022 |
| 0204 38 | 1 | COVER | 4931455081 | 4058546057145 |
| 0207 39 | 4 | SCREW | 4931624541 | 4002395762019 |
| 0210 40 | 1 | PISTON | 4931455038 | 4058546243654 |
| 0212 41 | 1 | GROOV. BALL BEARING | 4931455897 | 4058546243944 |
| 0213 42 | 1 | GROOV. BALL BEARING | 4931455895 | 4058546243920 |
| 0216 43 | 1 | PROTECTION WASHER | 4931455928 | 4058546244873 |
| 0217 44 | 1 | SPACER | 4931455951 | 4058546036195 |
| 0218 45 | 1 | RING D471 17X1 | 4931605204 | 4002395693641 |
| 0219 46 | 1 | SPROCKET | 4931455522 | 4058546243739 |
| 0220 47 | 1 | GEAR | 4931455530 | 4058546243746 |
| 0221 48 | 1 | DISC 31,7X26,5X0,4 | 4931881678 | 4002395706211 |
| 0223 49 | 1 | GEAR BOX COVER | 4931455892 | 4058546244774 |
| 0301 50 | 1 | END COVER CAP | 9170350243 | 4002395577330 |

| Position | Quantity | Description | Part number | EAN |
|----------|----------|---------------------------|-------------|---------------|
| 0302 51 | 1 | SLEEVE | 4931463983 | 4058546291693 |
| 0303 52 | 1 | SPRING RING | 9170319040 | 4002395571895 |
| 0304 53 | 1 | DAMPER | 4931409820 | 4002395834778 |
| 0305 54 | 1 | DAMPING RING | 4931463968 | 4058546290979 |
| 0306 55 | 1 | INTERLOCK SLEEVE | 4931463978 | 4058546291181 |
| 0307 56 | 1 | SEAL RETAINER | 4931455022 | 4058546056971 |
| 0308 57 | 1 | INTERLOCK PLATE | 4931375770 | 4002395739202 |
| 0309 58 | 1 | PRESSURE SPRING | 4931463917 | 4058546241605 |
| 0310 59 | 1 | SET COLLAR | 4931455021 | 4058546056964 |
| 0311 60 | 1 | INTERLOCK SLEEVE | 4931455020 | 4058546056957 |
| 0312 61 | 4 | SCREW | 4931624234 | 4002395717453 |
| 0313 62 | 1 | LOCKING PLATE | 4931455023 | 4058546056988 |
| 0314 63 | 1 | SEAL RING | 4931468729 | 4058546291211 |
| 0315 64 | 1 | SEAL RETAINER | 4931455025 | 4058546243425 |
| 0316 65 | 1 | RETAINING RING | 4931624235 | 4002395717460 |
| 0318 66 | 1 | THRUST COLLAR | 4931375420 | 4002395731619 |
| 0320 67 | 1 | BALL RACE | 4931463954 | 4058546270476 |
| 0321 68 | 1 | WASHER | 4931468791 | 4058546300722 |
| 0323 69 | 1 | ATTACHMENT RING | 4931375416 | 4002395731596 |
| 0324 70 | 1 | DRIVER | 4931463977 | 4058546291082 |
| 0326 71 | 1 | SNAP DIE | 4931455017 | 4058546243418 |
| 0328 72 | 1 | THRUST COLLAR | 4931375411 | 4002395731565 |
| 0330 73 | 1 | ATTACHMENT RING | 4931409791 | 4002395841486 |
| 0331 74 | 5 | DRIVER | 4931463952 | 4058546270452 |
| 0332 75 | 1 | SPINDLE SLEEVE | 4931463953 | 4058546270469 |
| 0333 76 | 1 | PERCUSSION BODY | 4931455028 | 4058546243432 |
| 0337 77 | 1 | GEAR BOX ASSY | 4931455945 | 4058546244958 |
| 0338 78 | 1 | SPINDLE | 4931455535 | 4058546243494 |
| 0700 79 | 1 | CARRYING CASE | 4931463094 | 4058546243326 |
| 1200 80 | 1 | MAINTENANCE SET | 4931468437 | 4058546291006 |
| 1201 81 | 1 | CARBON BRUSH SET | 4931468438 | 4058546291013 |
| 1202 82 | 4 | SCREW | 4931624234 | 4002395717453 |
| 1203 83 | 6 | SCREW | 4931624541 | 4002395762019 |
| 1204 84 | 1 | PISTONRING | 4931455927 | 4058546244866 |
| 1205 85 | 1 | PROTECTING COVER | 4931392174 | 4002395772872 |
| 1206 86 | 1 | BALL BEARING | 4931455898 | 4058546244781 |
| 1207 87 | 1 | RUBBER SLEEVE | 4931455066 | 4058546057091 |
| 1208 88 | 2 | SEAL RING N874701 28X5 | 4931624156 | 4002395731879 |
| 1209 89 | 1 | SEAL RING N874701 28X5 | 4931624161 | 4002395731909 |
| 1210 90 | 2 | SEAL RING N874701 28X5 | 4931624155 | 4002395731862 |
| 1211 91 | 2 | PISTONRING | 4931455510 | 4058546241193 |
| 1212 92 | 1 | SEAL RING | 4931463914 | 4058546241599 |
| 1213 93 | 1 | SPRING RING N874268 SW 20 | 4931624153 | 4002395731855 |
| 1214 94 | 1 | SEAL | 4931455539 | 4058546243760 |
| 1215 95 | 1 | FELT | 4931455541 | 4058546243777 |
| 1216 96 | 2 | GREASE TUBE | 4931432782 | 4002395863143 |
| 1217 97 | 2 | GREASE | 4931455865 | 4002395245925 |
| 1218 98 | 1 | RING | 4931455961 | 4058546036225 |
| 1219 99 | 4 | SCREW D 912 AM 5X50 | 4931624075 | 4002395705429 |
| 1220 100 | 2 | DAMPING ELEMENT | 4931455542 | 4058546244712 |

| Position | Quantity | Description | Part number | EAN |
|----------|----------|--------------------|-------------|---------------|
| 1221 101 | 2 | DAMPING ELEMENT | 4931455932 | 4058546244880 |
| 1222 102 | 1 | PISTONRING | 4931468797 | 4058546321215 |
| 1223 103 | 1 | SEAL RING | 4931455979 | 4058546241612 |
| 1224 104 | 1 | PISTONRING | 4931455917 | 4058546243975 |
| 1225 105 | 1 | GUIDE SLEEVE | 4931463940 | 4002395176748 |
| 1226 106 | 2 | BRUSH HOLDER | 4931463990 | 4058546292300 |
| 1227 107 | 2 | INTERLOCK ELEMENT | 4931468789 | 4058546390129 |
| 1228 108 | 1 | SCREW | 4931455991 | 4058546036287 |
| 1229 109 | 1 | SEAL RING | 4931468790 | 4058546300401 |
| 1230 110 | 1 | BACK-PRESSURE RING | 4931375412 | 4002395731572 |