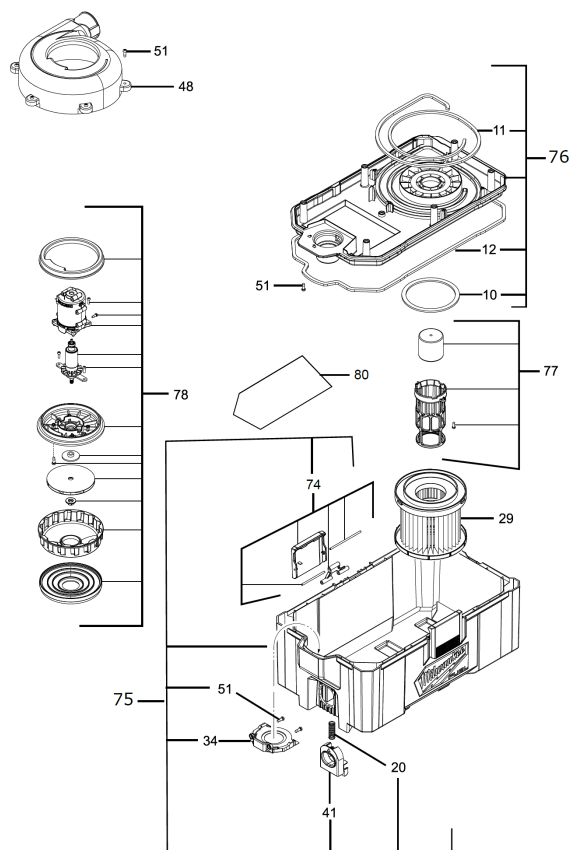
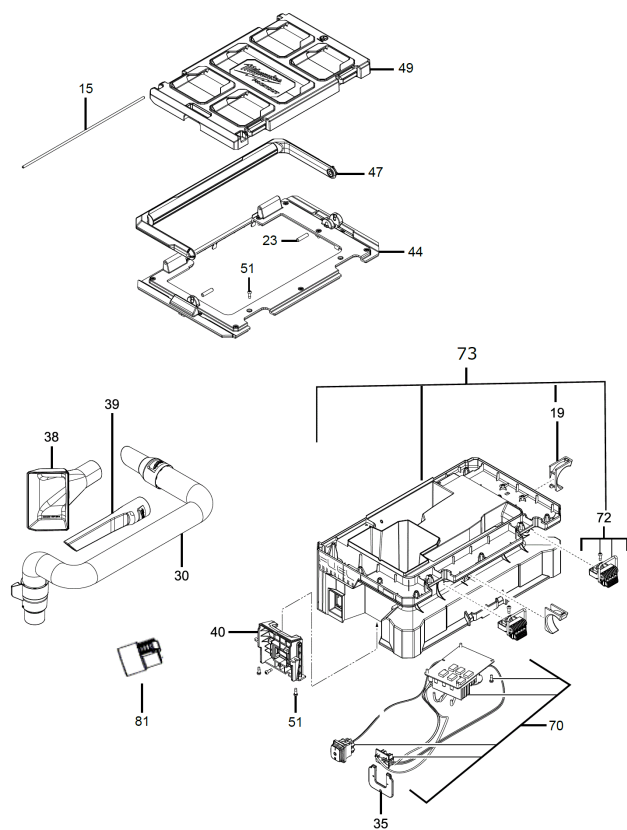


M18FPOVCL PACKOUT WET DRY VACUUM XXX

4933478187 - M18FPOVCL-0 - 4000477803





| Position | Quantity | Description | Part number | EAN |
|----------|----------|---------------------------------------|-------------------------------|---------------|
| 0010 1 | 1 | SEAL | 4931479698 | 4058546394615 |
| 0011 2 | 1 | SEAL | 4931479699 | 4058546394622 |
| 0012 3 | 1 | SEAL | 4931479700 | 4058546394639 |
| 0015 4 | 1 | PIN | 4931479701 | 4058546394646 |
| 0019 5 | 2 | HOLDER | 4931479702 | 4058546394653 |
| 0020 6 | 1 | SPRING | 4931479703 | 4058546394660 |
| 0023 7 | 2 | PIN | 4931479704 | 4058546394677 |
| 0030 8 | 1 | HOSE | 4931479705 | 4058546394684 |
| 0034 9 | 1 | HOLDER | 4931479706 | 4058546394691 |
| 0035 10 | 1 | HOLDING BRACKET | 4931479707 | 4058546394707 |
| 0038 11 | 1 | COARSE DIRT NOZZLE | 4931479708 | 4058546394714 |
| 0039 12 | 1 | FLAT JET NOZZLE | 4931479709 | 4058546394721 |
| 0040 13 | 1 | RECEPTION PIECE | 4931479710 | 4058546394738 |
| 0041 14 | 1 | LATCH | 4931479711 | 4058546394745 |
| 0044 15 | 1 | COVER | 4931479712 | 4058546394752 |
| 0047 16 | 1 | HANDLE | 4931479715 | 4058546394783 |
| 0048 17 | 1 | DIRECT.DUST CHUTE | 4931479716 | 4058546394790 |
| 0049 18 | 1 | COVER | 4931479717 | 4058546394806 |
| 0051 19 | 1 | SCREW | 4931479719 | 4058546394820 |
| 0070 20 | 1 | ELECTRONIC | 4931479720 | 4058546394837 |
| 0072 21 | 2 | LATCH | 4931479721 | 4058546394844 |
| 0073 22 | 1 | BODY | 4931494465 | 4058546470371 |
| 0074 23 | 2 | LATCH | 4931479722 | 4058546394851 |
| 0075 24 | 1 | TANK | 4931494466 | 4058546470388 |
| 0076 25 | 1 | CONNECTOR | 4931494467 | 4058546470395 |
| 0077 26 | 1 | LOCKING PART | 4931479723 | 4058546394868 |
| 0078 27 | 1 | MOTOR | Item discontinued(4931479724) | |
| 0080 28 | 1 | RATING PLATE | 4931479725 | 4058546394882 |
| 0081 29 | 1 | CONNECTOR | 4931447294 | 4002395251490 |
| 0029 30 | 1 | DRY FILTER HEPA UNIVERSAL REPLACEMENT | 4932478754 | 4058546360368 |