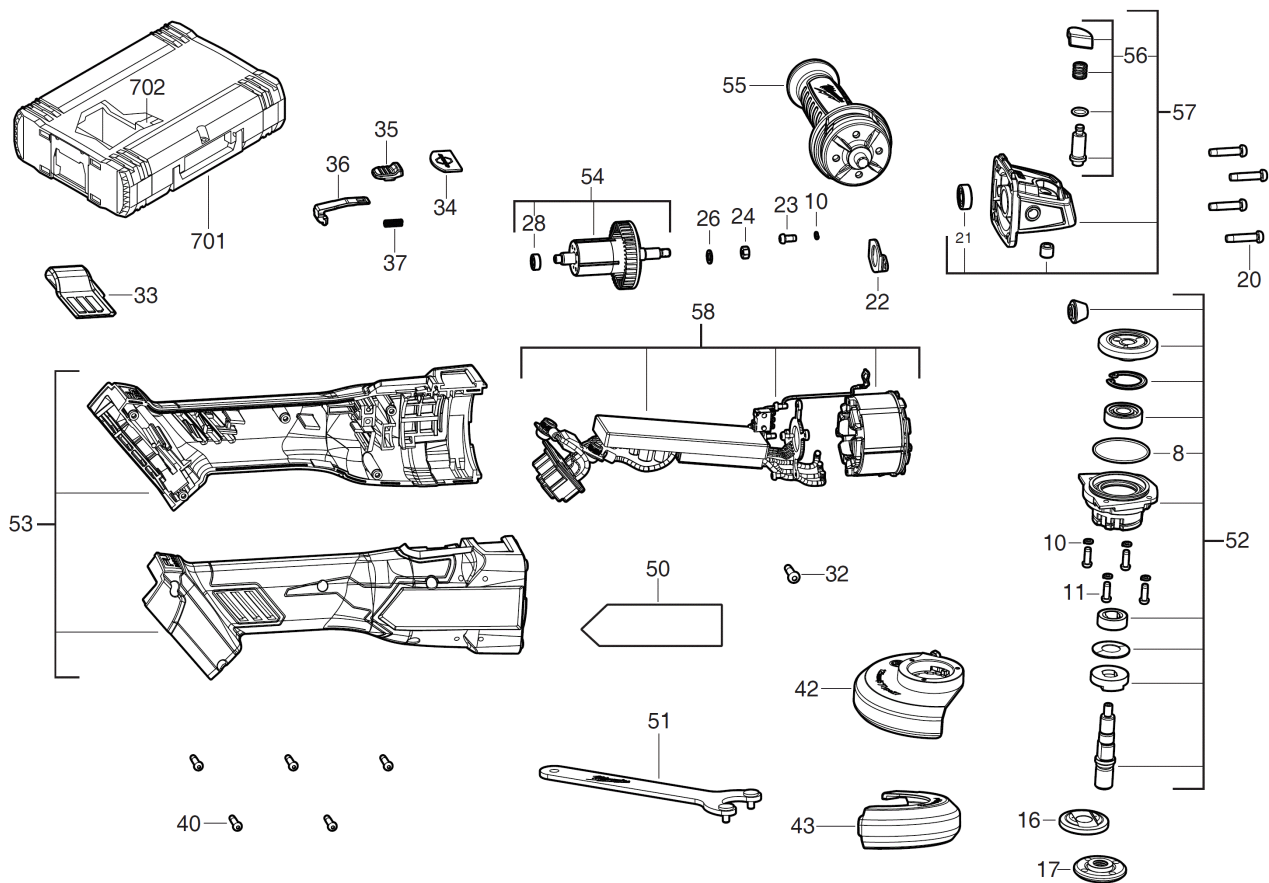


M18FSAG125XB-0 F.S. ANG.GRINDER II XXX

4933498062 - M18FSAG125XB-0 - 4000483266



Position	Quantity	Description	Part number	EAN
0008 1	1	O-RING	4931479267	4058546385828
0010 2	6	PROTECTION WASHER	680866003	4002395823895
0011 3	4	SCREW	4931435150	4002395859948
0016 4	1	FLANGE	4931479268	4058546385835
0017 5	1	FLANGE NUT	4931441309	4002395887699
0020 6	4	SCREW	660024030	4002395826957
0021 7	1	BALL BEARING	4931448373	4002395250769
0022 8	1	RETAINER	4931479269	4058546385842
0023 9	2	SCREW	660165015	4002395849826
0024 10	1	NUT	671686001	4002395824526
0026 11	1	WASHER	4931479270	4058546385859
0028 12	1	BALL BEARING	4931479271	4058546385866
0032 13	1	SCREW	4931436686	4002395258260
0033 14	1	DUST CAP	4931479275	4058546385903
0034 15	1	COVER	4931479398	4058546387136
0035 16	1	SLIDER	4931479272	4058546385873
0036 17	1	SLEEVE GUIDE	4931479399	4058546387143
0037 18	1	SPRING	4931479273	4058546385880
0040 19	5	SCREW	660031017	4002395825189
0042 20	1	GUARD	4931479287	4058546386023
0043 21	1	CUTTING GUARD	4931479288	4058546386030
0050 22	1	RATING PLATE	4931479400	4058546387150
0051 23	1	WRENCH	4931479278	4058546385934
0052 24	1	SPINDLE KIT	4931479281	4058546385965
0053 25	1	HOUSING	4931479401	4058546387167
0054 26	1	ROTOR	4931479282	4058546385972
0055 27	1	AUXILIARY HANDLE	4931435002	4002395855919
0056 28	1	SPINDLE LOCK	4931479280	4058546385958
0057 29	1	GEAR BOX	4931479402	4058546387174
0058 30	1	ELECTRIC FIELD	4931480425	4058546424404
0702 31	1	INSERT	4931479286	4058546386016