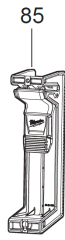
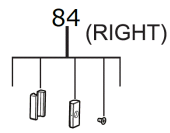
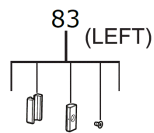
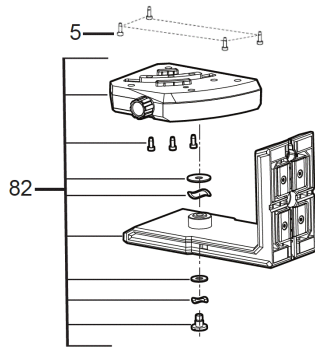
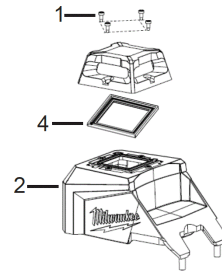
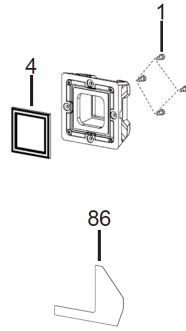
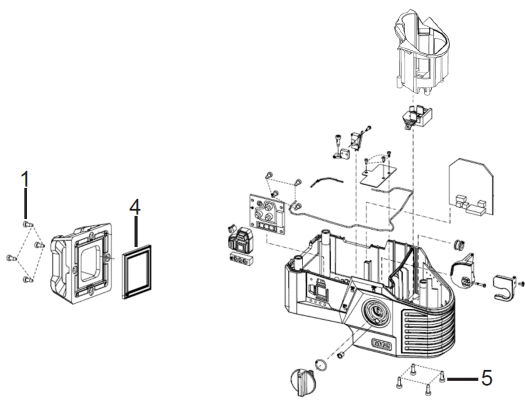


# M123PLKIT-401P KREUZLINIENLASER SET

4933478960 - M123PL-401P-SET - 4000477744





| Position | Quantity | Description                            | Part number | EAN           |
|----------|----------|--|-------------|---------------|
| 0001 1   | 1        | SCHRAUBE, NICHT ROST. STAHL            | 4931508007  | 4058546626693 |
| 0002 2   | 1        | GEHAEUSE, KUNSTST. F. KREUZLINIENLASER | 4931508008  | 4058546626709 |
| 0004 3   | 1        | LASERHALTERUNG/KUNSTSTOFF              | 4931473858  | 4058546364267 |
| 0005 4   | 1        | GUMMIDICHTUNG F. KREUZLINIENLASER      | 4931508009  | 4058546626716 |
| 0082 5   | 1        | LASERHALTER/KUNSTSTOFF                 | 4931473856  | 4058546364243 |
| 0083 6   | 2        | MAGNETE/SCHRAUBEN/BEFESTIGUNG          | 4931483405  | 4058546389963 |
| 0084 7   | 2        | MAGNETE/SCHRAUBEN/BEFESTIGUNG          | 4931473857  | 4058546364250 |
| 0085 8   | 1        | LASERHALTERUNG/KUNSTSTOFF              | 4931473858  | 4058546364267 |
| 0086 9   | 1        | LEISTUNGSSCHILD, FOLIE                 | 4931508011  | 4058546626730 |
| 0700 10  | 1        | WERKZEUGKOFFER/KUNSTSTOFF              | 4931473859  | 4058546364274 |