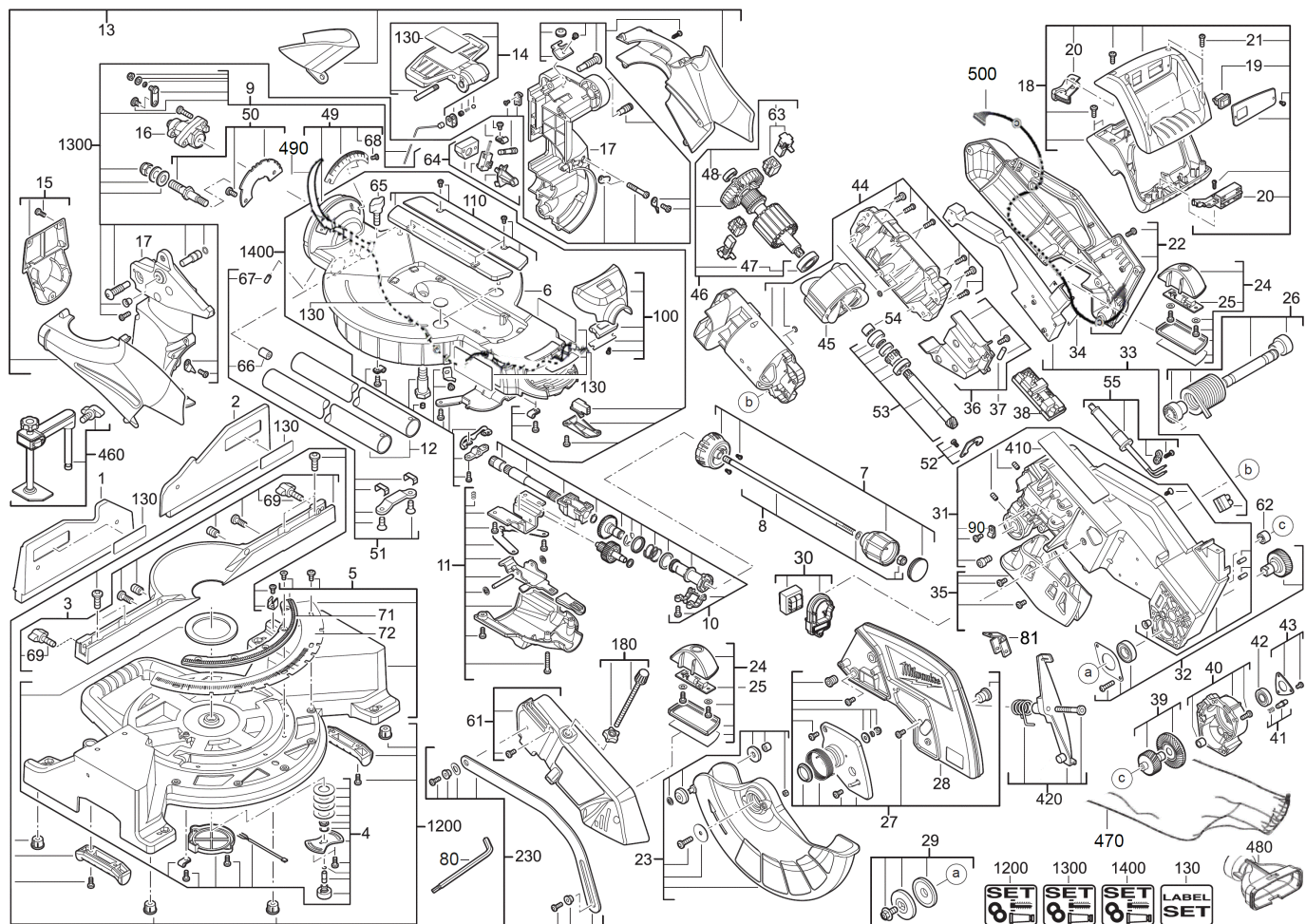


MS305DB COMPOUND MITER SAW IN2

4933411550 - MS305DB - 4000447645





Position	Quantity	Description	Part number	EAN
0001 1	1	GUARD	Item discontinued(4931440937)	
0002 2	1	GUARD	Item discontinued(4931440938)	
0003 3	1	GUARD	Item discontinued(4931440939)	
0004 4	1	POTENTIOMETER	101606706	4002395851751
0005 5	1	TABLE	4931440941	4002395863303
0006 6	1	TABLE	Item discontinued(101606719)	
0007 7	1	LOCKING LEVER	101606724	4002395853212
0008 8	1	ROD	101606723	4002395853205
0009 9	1	REPAIR KIT	101606728	4002395853960
0010 10	1	GEARWHEEL SET	101606720	4002395851775
0011 11	1	COVER	Item discontinued(101606725)	
0012 12	1	GUIDE TUBE	Item discontinued(101606090)	
0013 13	1	COVER	4931472177	4058546283940
0014 14	1	LEVER	Item discontinued(101606736)	
0015 15	1	COVER	101606771	4002395851010
0016 16	1	BRAKE DISC	Item discontinued(101606107)	
0017 17	1	LEVER	Item discontinued(101606735)	
0018 18	1	HANDLE COMPL.	Item discontinued(101606742)	
0019 19	1	SWITCH	Item discontinued(101606174)	
0020 20	1	SWITCH	Item discontinued(101606173)	
0021 21	1	SCREW	Item discontinued(101606158)	
0022 22	1	MOTOR COVER	101606774	4002395852550
0023 23	1	FASTENING PARTS	4931440946	4002395861378
0024 24	1	LIGHT PIPE	4931440947	4002395861385
0025 25	1	BULB	4931440948	4002395861392
0026 26	1	AXLE	101606746	4002395797493
0027 27	1	CONNECTION PLATE	Item discontinued(101606747)	
0028 28	1	GUARD	4931440949	4002395862009
0029 29	1	FLANGE	Item discontinued(101606748)	
0030 30	1	TRANSFORMER	4931440951	4002395862023
0031 31	1	LEVER	101606749	4002395794737
0032 32	1	GEAR KIT	101606761	4002395851737
0033 33	1	COVER	101606738	4002395851065
0034 34	1	ELECT.CIRCUIT BOARD	Item discontinued(101606164)	
0035 35	1	DEFLECTOR	101606775	4002395853953
0036 36	1	COVER	Item discontinued(101606739)	
0037 37	1	SPEED CONTROL	101606175	4002395851003
0038 38	1	ELECTRIC ELEMENT	Item discontinued(101606165)	
0039 39	1	GEARWHEEL SET	101606763	4002395851782
0040 40	1	GEAR BOX ASSY	Item discontinued(101606765)	
0041 41	1	PIN	101606768	4002395851720
0042 42	1	BALL BEARING	101606141	4002395853786
0043 43	1	BEARING COVER	101606766	4002395851027
0044 44	1	MOTOR HOUSING	Item discontinued(101606769)	
0045 45	1	FIELD LEAD GROMMET	101606163	4002395853267
0046 46	1	ARMATURE	4931440957	4002395861446
0047 47	1	BALL BEARING	Item discontinued(101606139)	
0048 48	1	BALL BEARING	101606138	4002395853755
0049 49	1	LINK	Item discontinued(101606726)	
0050 50	1	BRAKE DISC	101606727	4002395853984

Position	Quantity	Description	Part number	EAN
0051 51	1	CLAMPING SET	101606722	4002395796786
0052 52	1	BEARING COVER	Item discontinued(101606767)	
0053 53	1	GEARWHEEL SET	Item discontinued(101606764)	
0054 54	1	CLUTCH WHEEL	101606208	4002395853915
0055 55	1	CONNECTION CABLE	Item discontinued(101606762)	
0061 56	1	COVER	101606773	4002395851089
0062 57	1	NEEDLE BEARING	101606143	4002395853793
0063 58	1	BRUSH MODULE	4931433904	4002395894437
0064 59	1	REPAIR KIT	101606772	4002395853977
0065 60	1	WINGED SCREW	101606066	4002395853717
0066 61	1	RUBBER SLEEVE	Item discontinued(101606088)	
0067 62	1	THREADED PIN	101606082	4002395853724
0068 63	1	SCREW	101606029	4002395853700
0069 64	2	WINGED SCREW	101606021	4002395853090
0071 65	1	TOOTH RACK	Item discontinued(101606016)	
0072 66	1	SCALE	101606020	4002395853083
0080 67	1	WRENCH	Item discontinued(4931440961)	
0081 68	1	GUARD	4931440962	4002395861491
0090 69	1	CABLE CLAMP	4931453735	4002395142132
0100 70	1	COVER	Item discontinued(101606713)	
0110 71	1	PLATE	Item discontinued(101606714)	
0130 72	1	STICKER	101606712	4002395796724
0180 73	1	SCREW DEPTH GAUGE	101606776	4002395853908
0230 74	1	LINK	101606741	4002395797448
0410 75	1	RATING PLATE	Item discontinued(4931448719)	
0420 76	1	LEVER	4931440967	4002395862115
0460 77	1	VICE	Item discontinued(101606800)	
0470 78	1	DUST BAG	101606803	4002395822171
0480 79	1	ADAPTER	101606804	4002395822188
0490 80	1	CABLE HARNESS	Item discontinued(4931452162)	
0500 81	1	CABLE HARNESS	4931452163	4002395173617
1200 82	1	SET	Item discontinued(101606702)	
1300 83	1	SET	Item discontinued(101606731)	
1400 84	1	SET	Item discontinued(101606718)	