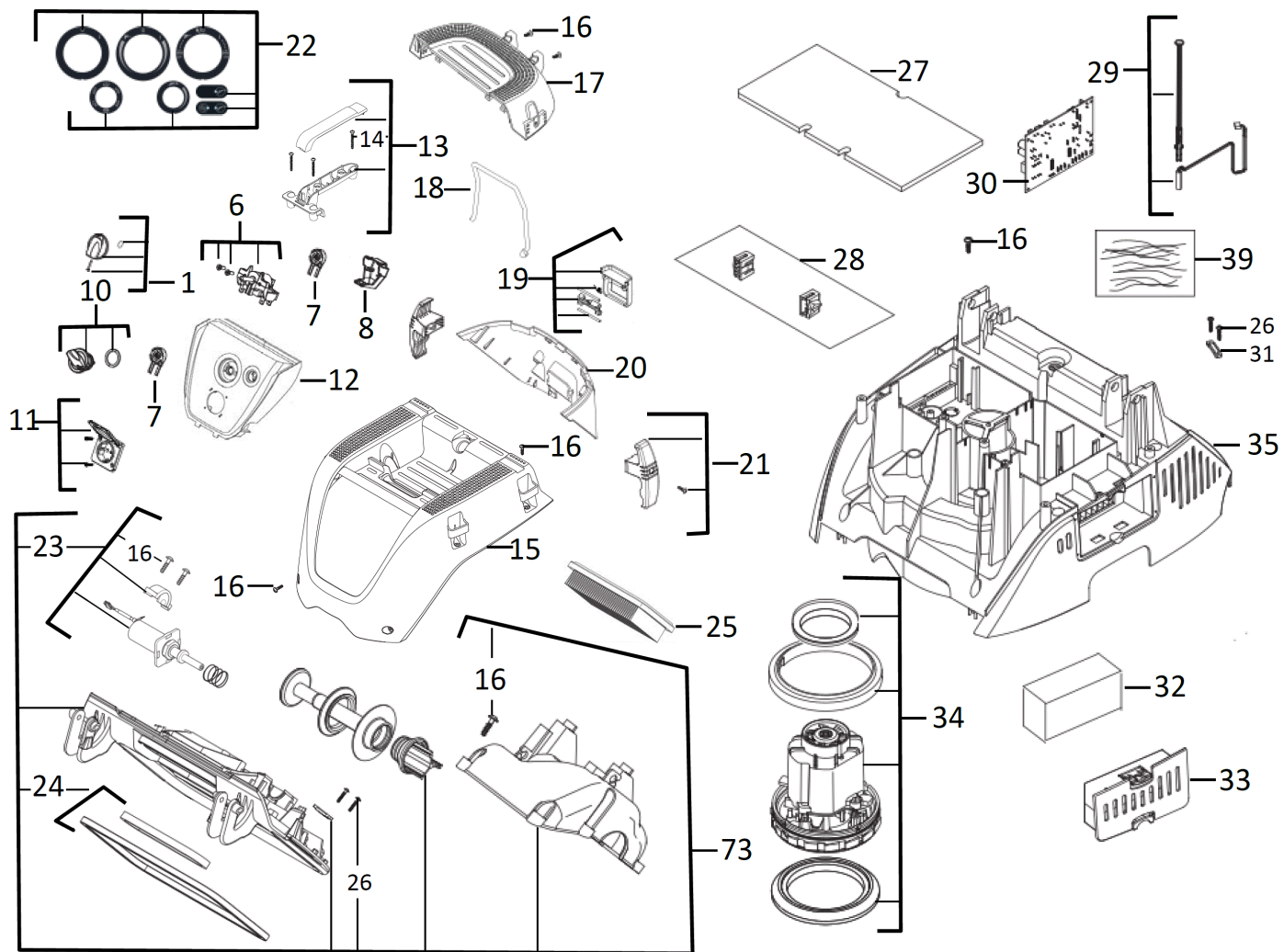
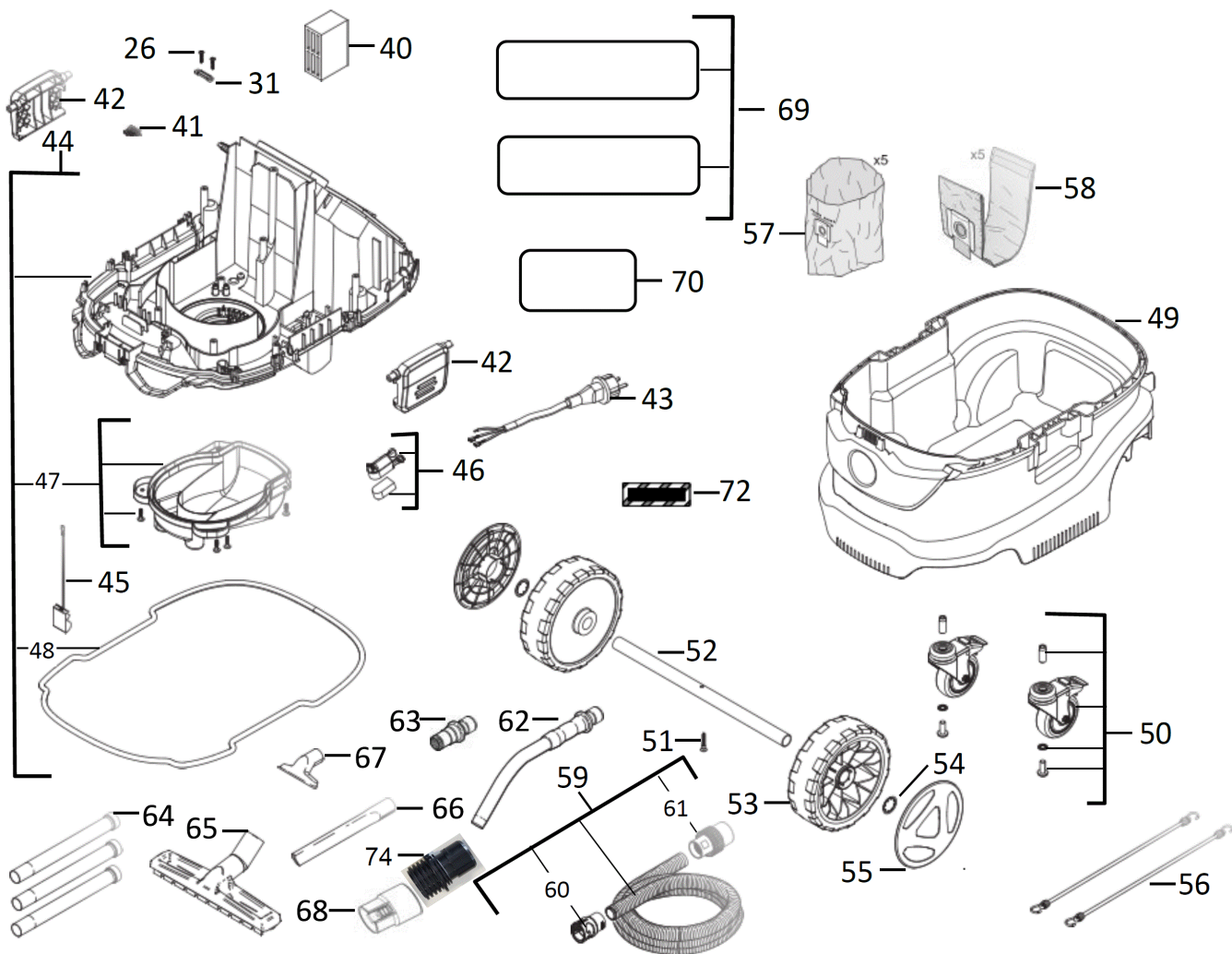


AS-30LAC AC-ODKURZACZ 30L

4933459411 - AS-30LACAC30LLCLASS - 4000458785







| Position | Quantity | Description | Part number | EAN |
|----------|----------|----------------------|-------------------------------|---------------|
| 0001 1 | 1 | GAŁKA | 4931416119 | 4002395805389 |
| 0006 2 | 1 | ZESTAW Z WŁĄCZNIKIEM | 4931461823 | 4058546040567 |
| 0007 3 | 2 | POTENCJOMETR | 4931461824 | 4058546040574 |
| 0008 4 | 1 | OSŁONA | 4931461825 | 4058546040581 |
| 0010 5 | 2 | GAŁKA | 4931461826 | 4058546040598 |
| 0011 6 | 1 | GNIAZDO SIECIOWE | 4931416260 | 4002395796458 |
| 0012 7 | 1 | ZESTAW Z PANELEM | 4931461827 | 4058546040604 |
| 0013 8 | 1 | ZESTAW Z RĘKOJEŚCIĄ | 4931461828 | 4058546040611 |
| 0014 9 | 1 | [TRAD] | 1000063920 | |
| 0015 10 | 1 | POKRYWA OBUDOWY | 4931461830 | 4058546040635 |
| 0016 11 | 17 | ŚRUBA | 4931448663 | 4002395261819 |
| 0017 12 | 1 | POKRYWA OBUDOWY | 4931461831 | 4058546040642 |
| 0018 13 | 1 | PAS | 4931461832 | 4058546040659 |
| 0019 14 | 1 | ZACISK, KLAMRA | 4931461833 | 4058546040666 |
| 0020 15 | 1 | POKRYWA OBUDOWY | 4931461834 | 4058546040673 |
| 0021 16 | 2 | HAK | 4931461835 | 4058546040680 |
| 0022 17 | 1 | NAKLEJKA | 4931461836 | 4058546040697 |
| 0023 18 | 1 | CEWKA | 4931461837 | 4058546040703 |
| 0024 19 | 1 | USZCZELKA | 4931461838 | 4058546040710 |
| 0025 20 | 1 | FILTR PTFE AS 30/42 | 4932459687 | 4058546028596 |
| 0026 21 | 4 | ŚRUBA | 4931448666 | 4002395258420 |
| 0027 22 | 1 | WKŁADKA PIANKOWA | 4931461839 | 4058546040727 |
| 0028 23 | 1 | UCHWYT | 4931461840 | 4058546040734 |
| 0029 24 | 1 | CZUJNIK | 4931461841 | 4058546040741 |
| 0030 25 | 1 | ELEKTRONIKA | 4931461842 | 4058546040758 |
| 0031 26 | 2 | CABLE JOINT | Item discontinued(4931416316) | |
| 0032 27 | 1 | DYFUZOR | 4931461843 | 4058546040765 |
| 0033 28 | 1 | OSŁONA | 4931461844 | 4058546040772 |
| 0034 29 | 1 | SILNIK, KOMPLET | 4931461845 | 4058546229450 |
| 0035 30 | 1 | POKRYWA OBUDOWY | 4931461846 | 4058546229467 |
| 0039 31 | 1 | KONDENSATOR | 4931461847 | 4058546229474 |
| 0040 32 | 1 | AMORTY WSTRZĄSÓW | 4931461848 | 4058546229481 |
| 0041 33 | 1 | ZESTAW ELEMENTÓW | Item discontinued(4931416317) | |
| 0042 34 | 2 | ZSZYWKA | 4931461849 | 4058546229498 |
| 0043 35 | 1 | KABEL ŁĄCZĄCY | 4931446489 | 4002395877164 |
| 0044 36 | 1 | OBUDOWA | 4931461850 | 4058546229504 |
| 0045 37 | 1 | SPRĘŻYNA STYKOWA | 4931461851 | 4058546229511 |
| 0046 38 | 1 | MOCOWANIE TARCZY | 4931461852 | 4058546229528 |
| 0047 39 | 1 | OSŁONA | 4931461853 | 4058546229535 |
| 0048 40 | 1 | USZCZELKA | 4931461854 | 4058546229542 |
| 0049 41 | 1 | ZBIORNIK | 4931461855 | 4058546229559 |
| 0050 42 | 1 | ROLKA | 4931461856 | 4058546229566 |
| 0051 43 | 1 | ŚRUBA | 4931461857 | 4058546229573 |
| 0052 44 | 1 | OŚ | 4931416336 | 4002395797998 |
| 0053 45 | 2 | ROLKA | 4931461858 | 4058546229580 |
| 0054 46 | 2 | PIERŚCIEŃ | 4931416339 | 4002395795185 |
| 0055 47 | 2 | OSŁONA | 4931461859 | 4058546229597 |
| 0056 48 | 1 | PAS | 4931461860 | 4058546229603 |
| 0059 49 | 1 | WĄŻ SSĄCY | 4931461861 | 4058546229610 |
| 0060 50 | 1 | ADAPTER | 4931461862 | 4058546229627 |

| Position | Quantity | Description | Part number | EAN |
|----------|----------|---------------------------------|-------------|---------------|
| 0061 51 | 1 | TULEJA ŁĄCZĄCA | 4931416458 | 4002395847167 |
| 0062 52 | 1 | ADAPTER | 4931416166 | 4002395805495 |
| 0063 53 | 1 | TULEJA ŁĄCZĄCA | 4931416173 | 4002395805501 |
| 0064 54 | 1 | RURA SSĄCA | 4931461863 | 4058546229634 |
| 0065 55 | 1 | DYSZA DO PODŁÓG | 4931448691 | 4002395256471 |
| 0066 56 | 1 | DYSZA | 4931416284 | 4002395797097 |
| 0067 57 | 1 | DYSZA | 4931416283 | 4002395797080 |
| 0068 58 | 1 | ZŁĄCZE | 4931447294 | 4002395251490 |
| 0069 59 | 1 | TABLICZKA ZNAMIONOWA | 4931461864 | 4058546229641 |
| 0070 60 | 1 | NAKLEJKA | 4931461865 | 4058546229658 |
| 0072 61 | 1 | NAKLEJKA | 4931461866 | 4058546229665 |
| 0073 62 | 1 | PRZYKRYWA RAMY | 4931461867 | 4058546229672 |
| 0074 63 | 1 | ADAPTER | 4931463999 | 4058546270490 |
| 0057 64 | 1 | WORKI FOLIOWE AS 30/42-5 SZT | 4932459690 | 4058546028626 |
| 0058 65 | 1 | WORKI WŁÓKNINOWE AS 30/42-5 SZT | 4932459689 | 4058546028619 |