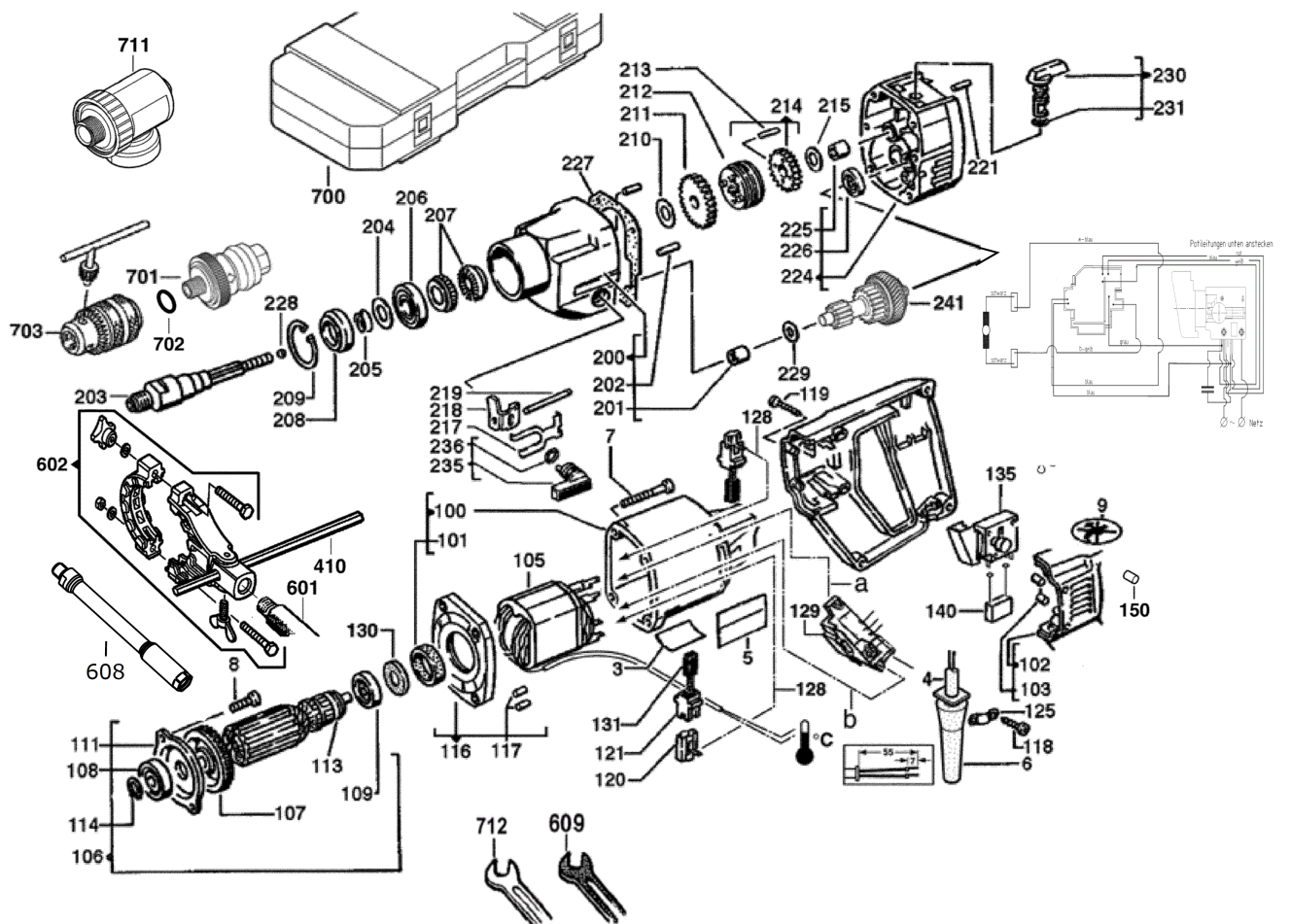


DD2-160XE DIAMOND DRILL IN2

4933368690 - DD2-160XE - 4000368691





| Position | Quantity | Description | Part number | EAN |
|----------|----------|-------------------------|-------------|---------------|
| 0003 1 | 1 | RATING PLATE | 4931368692 | 4002395743278 |
| 0004 2 | 1 | CONNECTION CABLE | 4931302112 | 4002395591657 |
| 0005 3 | 2 | NAME PLATE | 4931380498 | 4002395689729 |
| 0006 4 | 1 | CABLE ENTRY SLEEVE | 4931359575 | 4002395653607 |
| 0007 5 | 4 | SCREW D 912 M 4X70 8G | 4931614685 | 4002395694259 |
| 0008 6 | 2 | SCREW | 4931612817 | 4002395694105 |
| 0009 7 | 1 | LABEL | 4931321699 | 4002395603459 |
| 0100 8 | 1 | HOUSING | 4931359587 | 4002395653676 |
| 0101 9 | 1 | RUBBER SLEEVE | 4931301483 | 4002395591428 |
| 0102 10 | 1 | HANDLE | 4931359589 | 4002395653690 |
| 0103 11 | 4 | HOLDING-DOWN DEVICE | 562578001 | 4002395856992 |
| 0105 12 | 1 | ELECTRIC FIELD | 4931442730 | 4002395883912 |
| 0106 13 | 1 | ARMATURE | 4931463719 | 4058546299569 |
| 0107 14 | 1 | FAN | 4931476088 | 4058546342470 |
| 0108 15 | 1 | GROOVED BALL BEAR. | 4931368037 | 4002395670642 |
| 0109 16 | 1 | BALL BEARING | 4931901253 | 4002395706358 |
| 0111 17 | 1 | BEARING COVER | 4931267463 | 4002395587490 |
| 0113 18 | 1 | INSULATING DISC | 4931271823 | 4002395588138 |
| 0114 19 | 1 | RING | 4931605127 | 4002395693610 |
| 0116 20 | 1 | AIR DEFLECTOR RING | 4931337361 | 4002395620210 |
| 0117 21 | 2 | RUBBER STOP | 562578001 | 4002395856992 |
| 0118 22 | 2 | SCREW | 4931624538 | 4002395760039 |
| 0119 23 | 7 | SCREW | 4931618253 | 4002395694945 |
| 0120 24 | 2 | BRUSH HOLDER | 4931317546 | 4002395600212 |
| 0121 25 | 2 | BRUSH HOLDER INSUL | 4931317544 | 4002395600199 |
| 0125 26 | 1 | CABLE COLLAR | 4931256500 | 4002395586547 |
| 0128 27 | 2 | CONNECTION CABLE | 4931622342 | 4002395697496 |
| 0129 28 | 1 | PRINTED CIRC. BOARD | 4931463248 | 4058546036430 |
| 0130 29 | 1 | FELT WASHER | 4931300215 | 4002395590957 |
| 0131 30 | 1 | CARBON BRUSH SET | 4931392581 | 4002395740741 |
| 0135 31 | 1 | SWITCH | 4931385859 | 4002395721863 |
| 0140 32 | 1 | CAPACITOR | 4931385864 | 4002395723027 |
| 0150 33 | 1 | HOLDING-DOWN DEVICE | 4931409768 | 4002395847617 |
| 0200 34 | 1 | GEAR BOX | 4931412489 | 4002395799442 |
| 0201 35 | 1 | NEEDLE BEARING | 4931219424 | 4002395583874 |
| 0202 36 | 2 | PIN | 4931615663 | 4002395694402 |
| 0203 37 | 1 | DRILL SPINDLE | 4931307984 | 4002395593644 |
| 0204 38 | 1 | DISC | 4931621809 | 4002395696048 |
| 0205 39 | 1 | PRESSURE SPRING | 4931267406 | 4002395587421 |
| 0206 40 | 1 | BALL BEARING | 4931891058 | 4002395706303 |
| 0207 41 | 2 | PERCUSSION SLEEVE | 4931325240 | 4002395731145 |
| 0208 42 | 1 | SEAL RING | 4931267522 | 4002395587537 |
| 0209 43 | 1 | LOCKING RING | 4931890311 | 4002395706297 |
| 0210 44 | 1 | DISC | 4931943605 | 4002395707119 |
| 0211 45 | 1 | DRILL SPINDLE WHEEL | 4931368671 | 4002395742011 |
| 0212 46 | 1 | SHIFT RING COMPL. | 4931307130 | 4002395593064 |
| 0213 47 | 2 | PIN | 4931621732 | 4002395695867 |
| 0214 48 | 1 | DRILL SPINDLE WHEEL | 4931369652 | 4002395673858 |
| 0215 49 | 1 | DISC N874237 8,1X16X0,5 | 4931901226 | 4002395706334 |
| 0217 50 | 1 | RETAINING SPRING | 4931307118 | 4002395593057 |

| Position | Quantity | Description | Part number | EAN |
|----------|----------|-------------------------------------------------------------------------------------------------------------------------------------------------------------------------------------------------|-------------|---------------|
| 0218 51 | 1 | SWITCH LEVER | 4931309010 | 4002395594122 |
| 0219 52 | 1 | PIN | 4931621731 | 4002395695850 |
| 0221 53 | 1 | PIN | 4931621650 | 4002395695744 |
| 0224 54 | 1 | BEARING END PLATE | 4931412490 | 4002395799497 |
| 0225 55 | 1 | SLEEVE N874989 HKO 0810 | 4931912093 | 4002395706464 |
| 0226 56 | 1 | BALL BEARING | 4931624661 | 4002395790906 |
| 0227 57 | 1 | GASKET | 4931307995 | 4002395593729 |
| 0228 58 | 1 | BALL | 4931805437 | 4002395706037 |
| 0229 59 | 1 | DISC N874237 8,3X16,5X1 | 4931919962 | 4002395706563 |
| 0230 60 | 1 | SWITCH LEVER | 4931320109 | 4002395602223 |
| 0231 61 | 1 | O-RING N874701 8X1 | 4931943493 | 4002395707058 |
| 0235 62 | 1 | SWITCH LEVER | 4931310479 | 4002395594597 |
| 0236 63 | 1 | O-RING N874701 14X1 | 4931621782 | 4002395893485 |
| 0241 64 | 1 | REDUCTION GEAR | 4931368673 | 4002395742028 |
| 0410 65 | 1 | DEPTH GAUGE | 4931384434 | 4002395719402 |
| 0601 66 | 1 | HANDLE | 4931375516 | 4002395736027 |
| 0602 67 | 1 | CLAMPING RING | 4931407017 | 4002395784851 |
| 0608 68 | 1 | Не досту пно для д анной ве рсии | 1000000003 | |
| 0609 69 | 1 | KEY | 4931236557 | 4002395584765 |
| 0700 70 | 1 | CARRYING CASE | 4931412492 | 4002395793402 |
| 0702 71 | 1 | O-RING | 4931941117 | 4002395706969 |
| 72 | 1 | Chuck Key C S3T-1pc | 4932221379 | 4002395306381 |
| 0701 73 | 1 | FIXTEC ADAPTER FIXTEC M18/16 P1 MET | 4932399174 | 4002395357819 |
| 0703 74 | 1 | Keyed Chuck 3Jaw C 3.0-16 M18x2.5-1pc | 4932320014 | 4002395310784 |
| 0711 75 | 1 | FIXTEC CLR M18X2.5 / 1 1/4 P1M | 4932352172 | 4002395368242 |
| 0712 76 | 1 | OPEN-ENDED SPANNER SW17/24 P1 A/M | 4932345710 | 4002395307722 |